

Recombinant Human STK17B Protein, Myc/DDK-tagged, C13 and N15-labeled

Cat. No. STK17B-460H Lot. No. (See product label)

SPECIFICATION

Product Overview	STK17B MS Standard C13 and N15-labeled recombinant protein (NP_004217) with a C-terminal MYC/DDK tag, was expressed in HEK293 cells.
Species	Human
Source	HEK293
Description	Phosphorylates myosin light chains. Acts as a positive regulator of apoptosis.
Molecular Mass	42.3 kDa
AA Sequence	MSRRRFDCRSISGLLTTTPQIPIKMENFNNFYILTSKELGRGKFAVVRQCISKSTGQE YAAKFLKRRRGQDCRAEILHEIAVLELAKSCPRVINLHEVYENTSEILILEYAAGGEI FSLCLPELAEMVSENDVIRLIKQILEGVYYLHQNNIVHLDLKPQNILLSSIYPLGDIKIVD FGMSRKIGHACELREIMGTPEYLAPEILNYDPITTATDMWNIGIAYMLLTHTSPFVGE DNQETYLNISQVNVVDYSEETFSSVSQLATDFIQSLLVKNPEKRPTAEICLSHSLWQQ WDFENLFHPEETSSSSQTQDHSVRSSDKTSKSSCNGTCGDREDKENIPEDSSMV SKRFRFDDSLPNPHELVS DLLCTRTRPLEQKLISEEDLAANDILDYKDDDDKV
Purity	> 80% as determined by SDS-PAGE and Coomassie blue staining
Stability	Stable for 3 months from receipt of products under proper storage and handling conditions.

 Tel: 1-631-559-9269 1-516-512-3133

 Email: info@creative-biomart.com  Fax: 1-631-938-8127

 45-1 Ramsey Road, Shirley, NY 11967, USA

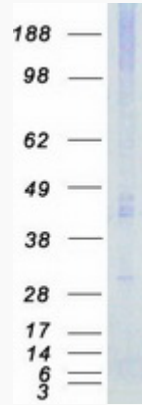
Storage	Store at -80 centigrade. Avoid repeated freeze-thaw cycles.
Concentration	50 µg/mL as determined by BCA
Storage Buffer	100 mM glycine, 25 mM Tris-HCl, pH 7.3.
GENE INFORMATION	
Gene Name	STK17B serine/threonine kinase 17b [Homo sapiens (human)]
Official Symbol	STK17B
Synonyms	STK17B; serine/threonine kinase 17b; serine/threonine kinase 17b (apoptosis inducing); serine/threonine-protein kinase 17B; death associated protein kinase related 2; DRAK2; death-associated protein kinase-related 2; DAP kinase-related apoptosis-inducing protein kinase 2;
Gene ID	9262
mRNA Refseq	NM_004226
Protein Refseq	NP_004217
MIM	604727
UniProt ID	O94768

 Tel: 1-631-559-9269 1-516-512-3133

 Email: info@creative-biomart.com  Fax: 1-631-938-8127

 45-1 Ramsey Road, Shirley, NY 11967, USA

SDS-PAGE



 Tel: 1-631-559-9269 1-516-512-3133

 Email: info@creative-biomart.com  Fax: 1-631-938-8127

 45-1 Ramsey Road, Shirley, NY 11967, USA