

Recombinant Human STK24 Protein, Myc/DDK-tagged, C13 and N15-labeled

Cat. No. STK24-6559H **Lot. No.** (See product label)

SPECIFICATION

Product Overview	STK24 MS Standard C13 and N15-labeled recombinant protein (NP_003567) with a C-terminal MYC/DDK tag, was expressed in HEK293 cells.
Species	Human
Source	HEK293
Description	This gene encodes a serine/threonine protein kinase that functions upstream of mitogen-activated protein kinase (MAPK) signaling. The encoded protein is cleaved into two chains by caspases; the N-terminal fragment (MST3/N) translocates to the nucleus and promotes programmed cells death. There is a pseudogene for this gene on chromosome X. Alternative splicing results in multiple transcript variants.
Molecular Mass	49.1 kDa
AA Sequence	MDSRAQLWGLALNKRRATLPHPGGSTNLKADPEELFTKLEKIGKGSFGEVFKGIDN RTQKVVAIKIIDLEEADEIEDIQEITVLSQCDSPLYVTKYYSYLKDTKLWIIMEYLG GSALDLLEPGPLDETQIATILREILKGLDYHSEKKIHRDIKAANVLLSEHGEVKLADFG VAGQLTDTQIKRNTFVGTFFWMAPEVIKQLAYDSKADIWSLGITAIELARGEPPHSEL HPMKVLFLLPKNNPPTLEGNYSKPLKEFVEACLNKEPSFRPTAKELLKHKFILRNAKK TSYLTELIDRYKRWKAEQSHDDSSSESDAETDGQASGGSDSGDWIFTIREKDPKN LENGALQPSDLDRNKMKDIPKRPFSQCLSTIISPLFAELKEKSQACGGNLSIEELRG AIYLAEACPGISDTMVAQLVQRLQRYSLSGGGTSSHTRTRPLEQKLISEEDLAANDI

 Tel: 1-631-559-9269 1-516-512-3133

 Email: info@creative-biomart.com  Fax: 1-631-938-8127

 45-1 Ramsey Road, Shirley, NY 11967, USA

LDYKDDDDKV

Purity > 80% as determined by SDS-PAGE and Coomassie blue staining

Stability Stable for 3 months from receipt of products under proper storage and handling conditions.

Storage Store at -80 centigrade. Avoid repeated freeze-thaw cycles.

Concentration 50 µg/mL as determined by BCA

Storage Buffer 100 mM glycine, 25 mM Tris-HCl, pH 7.3.

GENE INFORMATION

Gene Name [STK24 serine/threonine kinase 24 \[Homo sapiens \(human\) \]](#)

Official Symbol [STK24](#)

Synonyms STK24; serine/threonine kinase 24; serine/threonine kinase 24 (Ste20, yeast homolog); serine/threonine-protein kinase 24; MST 3; MST3; MST3B; STE20; STE20 like kinase 3; sterile 20 like kinase 3; STK3; STE20-like kinase 3; STE20-like kinase MST3; sterile 20-like kinase 3; mammalian STE20-like protein kinase 3; serine/threonine kinase 24 (STE20 homolog, yeast);

Gene ID [8428](#)

mRNA Refseq [NM_003576](#)

Protein Refseq [NP_003567](#)

 Tel: 1-631-559-9269 1-516-512-3133

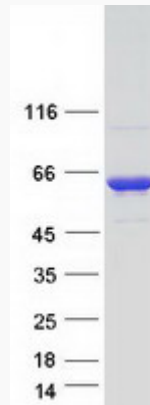
 Email: info@creative-biomart.com  Fax: 1-631-938-8127

 45-1 Ramsey Road, Shirley, NY 11967, USA

MIM 604984

UniProt ID Q9Y6E0

SDS-PAGE



 Tel: 1-631-559-9269 1-516-512-3133

 Email: info@creative-biomart.com  Fax: 1-631-938-8127

 45-1 Ramsey Road, Shirley, NY 11967, USA