

# Recombinant Full Length Human STMN1 Protein, C-Flag-tagged

**Cat. No.** STMN1-1907HFL    **Lot. No.** (See product label)

## SPECIFICATION

<b>Product Overview</b>	Recombinant Full Length Human STMN1 Protein, fused to Flag-tag at C-terminus, was expressed in Mammalian cells.
<b>Species</b>	Human
<b>Source</b>	Mammalian Cells
<b>Description</b>	This gene belongs to the stathmin family of genes. It encodes a ubiquitous cytosolic phosphoprotein proposed to function as an intracellular relay integrating regulatory signals of the cellular environment. The encoded protein is involved in the regulation of the microtubule filament system by destabilizing microtubules. It prevents assembly and promotes disassembly of microtubules. Multiple transcript variants encoding different isoforms have been found for this gene.
<b>Form</b>	25 mM Tris HCl, pH 7.3, 100 mM glycine, 10% glycerol.
<b>Molecular Mass</b>	17.1 kDa
<b>AA Sequence</b>	<p>MASSDIQVKELEKRASGQAFELILSPRSKESVPEFPLSPPKKKDFSLEEIQKKLEAAE  ERRKSHEAEVLK QLAEKREHEKEVLQKAIENNFSKMAEEKLTHKMEANKENREA  QMAAKLERLREKDKHIEEVRKNKESK DPADETEAD TRTRPLEQKLISEEDLAANDIL  DYKDDDDKV</p>
<b>Purity</b>	> 80% as determined by SDS-PAGE and Coomassie blue staining.

 Tel: 1-631-559-9269    1-516-512-3133

 Email: [info@creative-biomart.com](mailto:info@creative-biomart.com)     Fax: 1-631-938-8127

 45-1 Ramsey Road, Shirley, NY 11967, USA

<b>Stability</b>	Stable for 12 months from the date of receipt of the product under proper storage and handling conditions. Avoid repeated freeze-thaw cycles.
<b>Storage</b>	Store at -80 centigrade.
<b>Concentration</b>	>50 ug/mL as determined by microplate BCA method.
<b>Preparation</b>	Recombinant protein was captured through anti-DDK affinity column followed by conventional chromatography steps.
<b>Protein Pathways</b>	MAPK signaling pathway
<b>Full Length</b>	Full L.

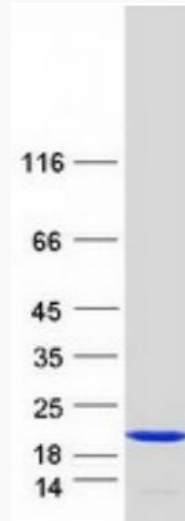
## GENE INFORMATION

<b>Gene Name</b>	STMN1 stathmin 1 [ Homo sapiens (human) ]
<b>Official Symbol</b>	STMN1
<b>Synonyms</b>	Lag; SMN; OP18; PP17; PP19; PR22; LAP18; C1orf215
<b>Gene ID</b>	3925
<b>mRNA Refseq</b>	NM_203399.2
<b>Protein Refseq</b>	NP_981944.1
<b>MIM</b>	151442
<b>UniProt ID</b>	P16949

 Tel: 1-631-559-9269 1-516-512-3133

 Email: [info@creative-biomart.com](mailto:info@creative-biomart.com)  Fax: 1-631-938-8127

 45-1 Ramsey Road, Shirley, NY 11967, USA



Coomassie blue staining of purified STMN1 protein.

 Tel: 1-631-559-9269 1-516-512-3133

 Email: [info@creative-biomart.com](mailto:info@creative-biomart.com)  Fax: 1-631-938-8127

 45-1 Ramsey Road, Shirley, NY 11967, USA