

# Recombinant Human STMN1 Protein, Myc/DDK-tagged, C13 and N15-labeled

**Cat. No.** STMN1-2900H    **Lot. No.** (See product label)

## SPECIFICATION

<b>Product Overview</b>	STMN1 MS Standard C13 and N15-labeled recombinant protein (NP_005554) with a C-terminal MYC/DDK tag, was expressed in HEK293 cells.
<b>Species</b>	Human
<b>Source</b>	HEK293
<b>Description</b>	This gene belongs to the stathmin family of genes. It encodes a ubiquitous cytosolic phosphoprotein proposed to function as an intracellular relay integrating regulatory signals of the cellular environment. The encoded protein is involved in the regulation of the microtubule filament system by destabilizing microtubules. It prevents assembly and promotes disassembly of microtubules. Multiple transcript variants encoding different isoforms have been found for this gene.
<b>Molecular Mass</b>	17.1 kDa
<b>AA Sequence</b>	MASDDIQVKELEKRASGQAFELILSPRSKESVPEFPLSPPKKKDLSEEEIQKKLEAAE ERRKSHEAEVLKQLAEKREHEKEVLQKAIEENNNFSKMAEEKLTHKMEANKENREA QMAAKLERLREKDKHIEEVRKNKESKDPADETEADTRTRPLEQKLISEEDLAANDILD YKDDDDKV
<b>Purity</b>	> 80% as determined by SDS-PAGE and Coomassie blue staining
<b>Stability</b>	Stable for 3 months from receipt of products under proper storage and handling

 Tel: 1-631-559-9269    1-516-512-3133

 Email: [info@creative-biomart.com](mailto:info@creative-biomart.com)     Fax: 1-631-938-8127

 45-1 Ramsey Road, Shirley, NY 11967, USA

conditions.

**Storage** Store at -80 centigrade. Avoid repeated freeze-thaw cycles.

**Concentration** 50 µg/mL as determined by BCA

**Storage Buffer** 100 mM glycine, 25 mM Tris-HCl, pH 7.3.

## GENE INFORMATION

**Gene Name** [STMN1 stathmin 1 \[ Homo sapiens \(human\) \]](#)

**Official Symbol** [STMN1](#)

**Synonyms** STMN1; stathmin 1; C1orf215, chromosome 1 open reading frame 215, LAP18, stathmin 1/oncoprotein 18; stathmin; FLJ32206; Lag; oncoprotein 18; OP18; PP17; PP19; PR22; SMN; prosolin; metablastin; phosphoprotein 19; phosphoprotein p19; stathmin 1/oncoprotein 18; transmembrane protein C1orf215; leukemia-associated phosphoprotein p18; LAP18; C1orf215; MGC138869; MGC138870;

**Gene ID** [3925](#)

**mRNA Refseq** [NM\\_005563](#)

**Protein Refseq** [NP\\_005554](#)

**MIM** [151442](#)

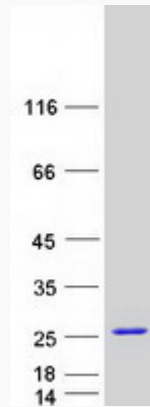
**UniProt ID** [P16949](#)

 Tel: 1-631-559-9269 1-516-512-3133

 Email: [info@creative-biomart.com](mailto:info@creative-biomart.com)  Fax: 1-631-938-8127

 45-1 Ramsey Road, Shirley, NY 11967, USA

**SDS-PAGE**



 Tel: 1-631-559-9269 1-516-512-3133

 Email: [info@creative-biomart.com](mailto:info@creative-biomart.com)  Fax: 1-631-938-8127

 45-1 Ramsey Road, Shirley, NY 11967, USA