

Recombinant Human STMN1 Protein, Myc/DDK-tagged, C13 and N15-labeled

Cat. No. STMN1-4822H Lot. No. (See product label)

SPECIFICATION

Product Overview	STMN1 MS Standard C13 and N15-labeled recombinant protein (NP_981944) with a C-terminal MYC/DDK tag, was expressed in HEK293 cells.
Species	Human
Source	HEK293
Description	This gene belongs to the stathmin family of genes. It encodes a ubiquitous cytosolic phosphoprotein proposed to function as an intracellular relay integrating regulatory signals of the cellular environment. The encoded protein is involved in the regulation of the microtubule filament system by destabilizing microtubules. It prevents assembly and promotes disassembly of microtubules. Multiple transcript variants encoding different isoforms have been found for this gene.
Molecular Mass	17.3 kDa
AA Sequence	MASDDIQVKELEKRASGQAFELILSPRSKESVPEFPLSPPKKKDFSLEEIQKKLEAAE ERRKSHEAEVLKQLAEKREHEKEVLQKAIEENNNFSKMAEEKLTHKMEANKENREA QMAAKLERLREKDKHIEEVRKNKESKDPADETEADTRTRPLEQKLISEEDLAANDILD YKDDDDKV
Purity	> 80% as determined by SDS-PAGE and Coomassie blue staining
Stability	Stable for 3 months from receipt of products under proper storage and handling

 Tel: 1-631-559-9269 1-516-512-3133

 Email: info@creative-biomart.com  Fax: 1-631-938-8127

 45-1 Ramsey Road, Shirley, NY 11967, USA

conditions.

Storage Store at -80 centigrade. Avoid repeated freeze-thaw cycles.

Concentration 50 µg/mL as determined by BCA

Storage Buffer 100 mM glycine, 25 mM Tris-HCl, pH 7.3.

GENE INFORMATION

Gene Name [STMN1 stathmin 1 \[Homo sapiens \(human\) \]](#)

Official Symbol [STMN1](#)

Synonyms STMN1; stathmin 1; C1orf215, chromosome 1 open reading frame 215, LAP18, stathmin 1/oncoprotein 18; stathmin; FLJ32206; Lag; oncoprotein 18; OP18; PP17; PP19; PR22; SMN; prosolin; metablastin; phosphoprotein 19; phosphoprotein p19; stathmin 1/oncoprotein 18; transmembrane protein C1orf215; leukemia-associated phosphoprotein p18; LAP18; C1orf215; MGC138869; MGC138870;

Gene ID [3925](#)

mRNA Refseq [NM_203399](#)

Protein Refseq [NP_981944](#)

MIM [151442](#)

UniProt ID [P16949](#)

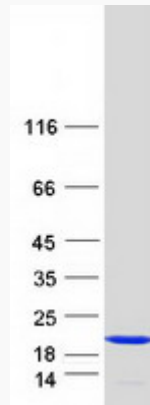
 Tel: 1-631-559-9269 1-516-512-3133

 Email: info@creative-biomart.com  Fax: 1-631-938-8127

 45-1 Ramsey Road, Shirley, NY 11967, USA



SDS-PAGE



☎ Tel: 1-631-559-9269 1-516-512-3133

☎ Email: info@creative-biomart.com ☎ Fax: 1-631-938-8127

☎ 45-1 Ramsey Road, Shirley, NY 11967, USA