

## Recombinant Human STMN1 Protein (Ala2-Asp149), N-His tagged

Cat. No. STMN1-5862H Lot. No. (See product label)

### SPECIFICATION

<b>Product Overview</b>	Recombinant human STMN1 (Ala2-Asp149) fused with the N-His tag was expressed in E. coli.
<b>Species</b>	Human
<b>Source</b>	E.coli
<b>ProteinLength</b>	Ala2-Asp149
<b>Form</b>	Lyophilized powder/frozen liquid
<b>Molecular Mass</b>	19.48 kDa
<b>Purity</b>	> 90 % as determined by SDS-PAGE
<b>Notes</b>	For research use only.
<b>Storage</b>	Use a manual defrost freezer and avoid repeated freeze thaw cycles. Store at 2 to 8 centigrade for one week. Store at -20 to -80 centigrade for twelve months from the date of receipt.
<b>Storage Buffer</b>	0.01M PBS, pH 7.4, 0.02 % NLS
<b>Reconstitution</b>	Reconstitute in sterile water for a stock solution.

 Tel: 1-631-559-9269 1-516-512-3133

 Email: [info@creative-biomart.com](mailto:info@creative-biomart.com)  Fax: 1-631-938-8127

 45-1 Ramsey Road, Shirley, NY 11967, USA

**Shipping** They are shipped out with dry ice/blue ice unless customers require otherwise.

## GENE INFORMATION

**Gene Name** [STMN1 stathmin 1 \[ Homo sapiens \(human\) \]](#)

**Official Symbol** [STMN1](#)

**Synonyms** STMN1; stathmin 1; C1orf215, chromosome 1 open reading frame 215, LAP18, stathmin 1/oncoprotein 18; stathmin; FLJ32206; Lag; oncoprotein 18; OP18; PP17; PP19; PR22; SMN; prosolin; metablastin; phosphoprotein 19; phosphoprotein p19; stathmin 1/oncoprotein 18; transmembrane protein C1orf215; leukemia-associated phosphoprotein p18; LAP18; C1orf215; MGC138869; MGC138870;

**Gene ID** [3925](#)

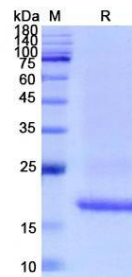
**mRNA Refseq** [NM\\_001145454](#)

**Protein Refseq** [NP\\_001138926](#)

**MIM** [151442](#)

**UniProt ID** [P16949](#)

### SDS-PAGE



 Tel: 1-631-559-9269 1-516-512-3133

 Email: [info@creative-biomart.com](mailto:info@creative-biomart.com)  Fax: 1-631-938-8127

 45-1 Ramsey Road, Shirley, NY 11967, USA