

Recombinant Human STMN2 Protein, Myc/DDK-tagged, C13 and N15-labeled

Cat. No. STMN2-4029H Lot. No. (See product label)

SPECIFICATION

Product Overview	STMN2 MS Standard C13 and N15-labeled recombinant protein (NP_008960) with a C-terminal MYC/DDK tag, was expressed in HEK293 cells.
Species	Human
Source	HEK293
Description	This gene encodes a member of the stathmin family of phosphoproteins. Stathmin proteins function in microtubule dynamics and signal transduction. The encoded protein plays a regulatory role in neuronal growth and is also thought to be involved in osteogenesis. Reductions in the expression of this gene have been associated with Down's syndrome and Alzheimer's disease. Alternatively spliced transcript variants have been observed for this gene. A pseudogene of this gene is located on the long arm of chromosome 6.
Molecular Mass	20.8 kDa
AA Sequence	MAKTAMAYKEKMKELSMLESLICSCFYPEPRNINIYTYDDMEVKQINKRASGQAFELIL KPPSPISEAPRTLASPKKDLSEELIQKKLEAAEERRKSQEAQVLKQLAEKREHERE VLQKALEENNFASKMAEEKLILKMEQIKENREANLAAIIRLQEKERHAAEVRRNKEL QVELSGTRTRPLEQKLISEEDLAANDILDYKDDDDKV
Purity	> 80% as determined by SDS-PAGE and Coomassie blue staining

 Tel: 1-631-559-9269 1-516-512-3133

 Email: info@creative-biomart.com  Fax: 1-631-938-8127

 45-1 Ramsey Road, Shirley, NY 11967, USA

Stability	Stable for 3 months from receipt of products under proper storage and handling conditions.
Storage	Store at -80 centigrade. Avoid repeated freeze-thaw cycles.
Concentration	50 µg/mL as determined by BCA
Storage Buffer	100 mM glycine, 25 mM Tris-HCl, pH 7.3.

GENE INFORMATION

Gene Name	STMN2 stathmin-like 2 [Homo sapiens (human)]
Official Symbol	STMN2
Synonyms	STMN2; stathmin-like 2; SCGN10; stathmin-2; SCG10; superior cervical ganglion-10 protein; neuron-specific growth-associated protein; superior cervical ganglia, neural specific 10; neuronal growth-associated protein (silencer element); FLJ34868; FLJ50995;
Gene ID	11075
mRNA Refseq	NM_007029
Protein Refseq	NP_008960
MIM	600621
UniProt ID	Q93045

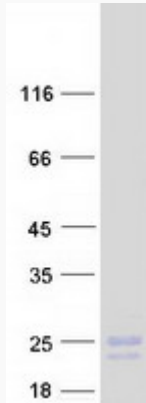
 Tel: 1-631-559-9269 1-516-512-3133

 Email: info@creative-biomart.com  Fax: 1-631-938-8127

 45-1 Ramsey Road, Shirley, NY 11967, USA



SDS-PAGE



Tel: 1-631-559-9269 1-516-512-3133

Email: info@creative-biomart.com Fax: 1-631-938-8127

45-1 Ramsey Road, Shirley, NY 11967, USA