

## Recombinant Human STRA6 protein(1-50aa), hFc-tagged

Cat. No. STRA6-6567H Lot. No. (See product label)

### SPECIFICATION

<b>Product Overview</b>	Recombinant Human STRA6 protein(Q9BX79)(1-50aa), fused with C-terminal hFc tag, was expressed in Yeast.
<b>Species</b>	Human
<b>Source</b>	Yeast
<b>ProteinLength</b>	1-50aa
<b>Form</b>	If the delivery form is liquid, the default storage buffer is Tris/PBS-based buffer, 5%-50% glycerol. If the delivery form is lyophilized powder, the buffer before lyophilization is Tris/PBS-based buffer, 6% Trehalose, pH 8.0.
<b>Molecular Mass</b>	33.4 kDa
<b>Purity</b>	Greater than 90% as determined by SDS-PAGE.
<b>Storage</b>	Store at -20°C/-80°C upon receipt, aliquoting is necessary for mutiple use. Avoid repeated freeze-thaw cycles.
<b>Reconstitution</b>	We recommend that this vial be briefly centrifuged prior to opening to bring the contents to the bottom. Please reconstitute protein in deionized sterile water to a concentration of 0.1-1.0 mg/mL. We recommend to add 5-50% of glycerol (final concentration) and aliquot for long-term storage at -20°C/-80°C.

 Tel: 1-631-559-9269 1-516-512-3133

 Email: [info@creative-biomart.com](mailto:info@creative-biomart.com)  Fax: 1-631-938-8127

 45-1 Ramsey Road, Shirley, NY 11967, USA

**AA Sequence** MSSQPAGNQTSPGATEDYSYGSWYIDEPQGGEEELQPEGEVPSCHTSIPPG

## GENE INFORMATION

**Gene Name** STRA6 stimulated by retinoic acid gene 6 homolog (mouse) [ Homo sapiens ]

**Official Symbol** STRA6

**Synonyms** STRA6; stimulated; stimulated by retinoic acid gene 6 protein homolog; FLJ12541; MCOPS9; PP14296;

**Gene ID** 64220

**mRNA Refseq** NM\_001142617

**Protein Refseq** NP\_001136089

**MIM** 610745

**UniProt ID** Q9BX79

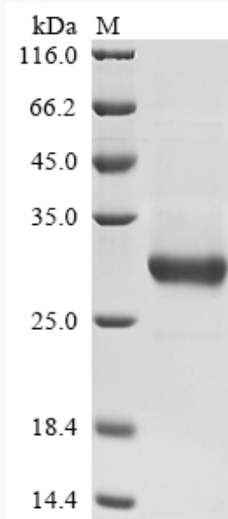
 Tel: 1-631-559-9269 1-516-512-3133

 Email: [info@creative-biomart.com](mailto:info@creative-biomart.com)  Fax: 1-631-938-8127

 45-1 Ramsey Road, Shirley, NY 11967, USA



SDS-PAGE



Tel: 1-631-559-9269 1-516-512-3133

Email: [info@creative-biomart.com](mailto:info@creative-biomart.com) Fax: 1-631-938-8127

45-1 Ramsey Road, Shirley, NY 11967, USA