

Recombinant Full Length Human STS Protein, C-Flag-tagged

Cat. No. STS-1272HFL Lot. No. (See product label)

SPECIFICATION

Product Overview	Recombinant Full Length Human STS Protein, fused to Flag-tag at C-terminus, was expressed in Mammalian cells.
Species	Human
Source	Mammalian Cells
Description	This gene encodes a multi-pass membrane protein that is localized to the endoplasmic reticulum. It belongs to the sulfatase family and hydrolyzes several 3-beta-hydroxysteroid sulfates, which serve as metabolic precursors for estrogens, androgens, and cholesterol. Mutations in this gene are associated with X-linked ichthyosis (XLI). Alternatively spliced transcript variants resulting from the use of different promoters have been described for this gene.
Form	25 mM Tris HCl, pH 7.3, 100 mM glycine, 10% glycerol.
Molecular Mass	62.9 kDa
AA Sequence	MPLRKMKIPFLLLFFLWEAESAASRPNIILVMADDLGIGDPGCYGNKTIRTPNIDRLA SGGVKLTQH LA ASPLCTPSRAAFMTGRYPVRSGMASWSRTGVFLFTASSGGLPTD EITFAKLLKDQGYSTALIGKWHLGMS CHSKTDFCHHPLHHGFNYFYGISLTNLRDCK PGEFSVFTTGFKRLVFLPLQIVGVTLTLLAALNCLGLLH VPLGVFFSLLFLAALILTFL GFLHYFRPLNCFMMRNYEIIQQPMSYDNLQRLTVEAAQFIQRNTE TPF LLVLSYLH VHTALFSSKDFAGKSQHG VYGD AVEEMDWSVGQILNLLDELRLANDTLIYFTSDQG AHVEEV SSKGEIHGGSNGIYKGGKANNWEGGIRVPGILRWPRVIQAGQKIDEPTSN

 Tel: 1-631-559-9269 1-516-512-3133

 Email: info@creative-biomart.com  Fax: 1-631-938-8127

 45-1 Ramsey Road, Shirley, NY 11967, USA

MDIFPTVAKLAGAPLPEDRI IDGRDLMPLLEGKSQRS DHEFLFHYCNAYLNAVRWHP
 QNSTSIWKAFFFTPNFNPVGSNGCFATHVCFCF GSYVTHHDPPLLFDISK DPRERN
 PLTPASEPRFYEILKVMQEADRHTQTLPEVPDQFSWNNFLWKPWLQ
 LCCPSTGLSCQC DREKQDKRLSRTRTRPLEQKLISEEDLAANDILDYKDDDDKV

Purity	> 80% as determined by SDS-PAGE and Coomassie blue staining.
Stability	Stable for 12 months from the date of receipt of the product under proper storage and handling conditions. Avoid repeated freeze-thaw cycles.
Storage	Store at -80 centigrade.
Concentration	>50 ug/mL as determined by microplate BCA method.
Preparation	Recombinant protein was captured through anti-DDK affinity column followed by conventional chromatography steps.
Protein Families	Druggable Genome, Transmembrane
Protein Pathways	Androgen and estrogen metabolism
Full Length	Full L.

GENE INFORMATION

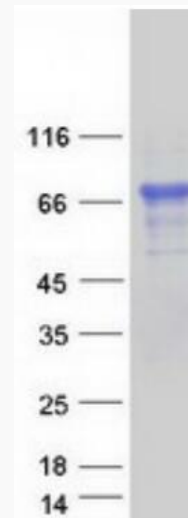
Gene Name	STS steroid sulfatase [Homo sapiens (human)]
Official Symbol	STS
Synonyms	ES; ASC; XLI; ARSC; SSDD; ARSC1

 Tel: 1-631-559-9269 1-516-512-3133

 Email: info@creative-biomart.com  Fax: 1-631-938-8127

 45-1 Ramsey Road, Shirley, NY 11967, USA

Gene ID	412
mRNA Refseq	NM_000351.7
Protein Refseq	NP_000342.3
MIM	300747
UniProt ID	P08842



Coomassie blue staining of purified STS protein.

Tel: 1-631-559-9269 1-516-512-3133

Email: info@creative-biomart.com Fax: 1-631-938-8127

45-1 Ramsey Road, Shirley, NY 11967, USA