

## Recombinant Human STT3A Protein, GST-tagged

**Cat. No.** STT3A-4957H    **Lot. No.** (See product label)

### SPECIFICATION

<b>Product Overview</b>	Human ITM1 partial ORF ( NP_689926, 603 a.a. - 701 a.a.) recombinant protein with GST-tag at N-terminal.
<b>Species</b>	Human
<b>Source</b>	Wheat Germ
<b>Description</b>	The protein encoded by this gene is a catalytic subunit of the N-oligosaccharyltransferase (OST) complex, which functions in the endoplasmic reticulum to transfer glycan chains to asparagine residues of target proteins. A separate complex containing a similar catalytic subunit with an overlapping function also exists. Multiple transcript variants encoding different isoforms have been found for this gene. [provided by RefSeq, Aug 2015]
<b>Molecular Mass</b>	36.63 kDa
<b>AA Sequence</b>	GGSTDTGKHIKENDYYTPTGFRVDREGSPVLLNCLMYKMCYYRFGQVYTEAKRPP GFDRVRNAEIGNKDFELDVLEEAYTTEHWLVRIYKVKDLNDRG
<b>Applications</b>	Enzyme-linked Immunoabsorbent Assay Western Blot (Recombinant protein) Antibody Production Protein Array
<b>Notes</b>	Best use within three months from the date of receipt of this protein.

 Tel: 1-631-559-9269    1-516-512-3133

 Email: [info@creative-biomart.com](mailto:info@creative-biomart.com)     Fax: 1-631-938-8127

 45-1 Ramsey Road, Shirley, NY 11967, USA

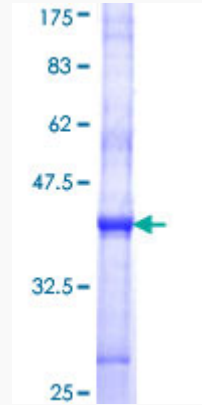
<b>Storage</b>	Store at -80 centigrade. Aliquot to avoid repeated freezing and thawing.
<b>Storage Buffer</b>	50 mM Tris-HCl, 10 mM reduced Glutathione, pH=8.0 in the elution buffer.
<b>GENE INFORMATION</b>	
<b>Gene Name</b>	STT3A STT3, subunit of the oligosaccharyltransferase complex, homolog A ( <i>S. cerevisiae</i> ) [ <i>Homo sapiens</i> ]
<b>Official Symbol</b>	STT3A
<b>Synonyms</b>	STT3A; STT3, subunit of the oligosaccharyltransferase complex, homolog A ( <i>S. cerevisiae</i> ); integral membrane protein 1 , ITM1; dolichyl-diphosphooligosaccharide--protein glycosyltransferase subunit STT3A; MGC9042; STT3 A; TMC; B5; transmembrane conserved; transmembrane protein TMC; integral membrane protein 1; integral transmembrane protein 1; oligosaccharyl transferase subunit STT3A; ITM1; STT3-A; FLJ27038;
<b>Gene ID</b>	3703
<b>mRNA Refseq</b>	NM_152713
<b>Protein Refseq</b>	NP_689926
<b>MIM</b>	601134
<b>UniProt ID</b>	P46977

 Tel: 1-631-559-9269 1-516-512-3133

 Email: [info@creative-biomart.com](mailto:info@creative-biomart.com)  Fax: 1-631-938-8127

 45-1 Ramsey Road, Shirley, NY 11967, USA

**Quality Control  
Testing**



12.5% SDS-PAGE Stained with Coomassie Blue

 Tel: 1-631-559-9269 1-516-512-3133

 Email: [info@creative-biomart.com](mailto:info@creative-biomart.com)  Fax: 1-631-938-8127

 45-1 Ramsey Road, Shirley, NY 11967, USA