

# Recombinant Full Length Human STUB1 Protein, C-Flag-tagged

**Cat. No.** STUB1-1597HFL    **Lot. No.** (See product label)

## SPECIFICATION

<b>Product Overview</b>	Recombinant Full Length Human STUB1 Protein, fused to Flag-tag at C-terminus, was expressed in Mammalian cells.
<b>Species</b>	Human
<b>Source</b>	Mammalian Cells
<b>Description</b>	This gene encodes a protein containing tetratricopeptide repeat and a U-box that functions as a ubiquitin ligase/cochaperone. The encoded protein binds to and ubiquitinates shock cognate 71 kDa protein (Hspa8) and DNA polymerase beta (Polb), among other targets. Mutations in this gene cause spinocerebellar ataxia, autosomal recessive 16. Alternative splicing results in multiple transcript variants. There is a pseudogene for this gene on chromosome 2.
<b>Form</b>	25 mM Tris HCl, pH 7.3, 100 mM glycine, 10% glycerol.
<b>Molecular Mass</b>	34.7 kDa
<b>AA Sequence</b>	MKGKEEKEGGARLGAGGGSPEKSPSAQELKEQGNRLFVGRKYPEAAACYGRAITR NPLVAVYYTNRALC YLKMQQHEQALADCRRALELDGQSVKAHFFLGQCQLEMESY DEAIANLQRAYSLAKEQRLNFGDDIPSA LRIAKKKRWNSIEERRIHQSELSYLSRLI AAERERELEECQRNHEGDEDDSHVRAQQACIEAKHDKY MADMDELFSQVDEKRY KRDIPDYLCGKISFELMREPCITPSGITYDRKDIEEHLQRVGHFDPVTRSPLT QEQLIPNLAMKEVIDAFISENGWVEDYSGPTRTRPLEQKLISEEDLAANDILDYKDDD

 Tel: 1-631-559-9269    1-516-512-3133

 Email: [info@creative-biomart.com](mailto:info@creative-biomart.com)     Fax: 1-631-938-8127

 45-1 Ramsey Road, Shirley, NY 11967, USA

	DKV
<b>Purity</b>	> 80% as determined by SDS-PAGE and Coomassie blue staining.
<b>Stability</b>	Stable for 12 months from the date of receipt of the product under proper storage and handling conditions. Avoid repeated freeze-thaw cycles.
<b>Storage</b>	Store at -80 centigrade.
<b>Concentration</b>	>50 ug/mL as determined by microplate BCA method.
<b>Preparation</b>	Recombinant protein was captured through anti-DDK affinity column followed by conventional chromatography steps.
<b>Protein Families</b>	Druggable Genome
<b>Protein Pathways</b>	Ubiquitin mediated proteolysis
<b>Full Length</b>	Full L.

## GENE INFORMATION

<b>Gene Name</b>	STUB1 STIP1 homology and U-box containing protein 1 [ Homo sapiens (human) ]
<b>Official Symbol</b>	STUB1
<b>Synonyms</b>	CHIP; SCA48; UBOX1; SCAR16; HSPABP2; NY-CO-7; SDCCAG7
<b>Gene ID</b>	10273
<b>mRNA Refseq</b>	NM_005861.4

 Tel: 1-631-559-9269 1-516-512-3133

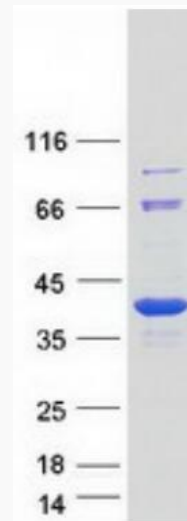
 Email: [info@creative-biomart.com](mailto:info@creative-biomart.com)  Fax: 1-631-938-8127

 45-1 Ramsey Road, Shirley, NY 11967, USA

**Protein Refseq** NP\_005852.2

**MIM** 607207

**UniProt ID** Q9UNE7



Coomassie blue staining of purified STUB1 protein.

 Tel: 1-631-559-9269 1-516-512-3133

 Email: [info@creative-biomart.com](mailto:info@creative-biomart.com)  Fax: 1-631-938-8127

 45-1 Ramsey Road, Shirley, NY 11967, USA