

Recombinant Human STX16 Protein, Myc/DDK-tagged, C13 and N15-labeled

Cat. No. STX16-1958H Lot. No. (See product label)

SPECIFICATION

Product Overview	STX16 MS Standard C13 and N15-labeled recombinant protein (NP_003754) with a C-terminal MYC/DDK tag, was expressed in HEK293 cells.
Species	Human
Source	HEK293
Description	This gene encodes a protein that is a member of the syntaxin or t-SNARE (target-SNAP receptor) family. These proteins are found on cell membranes and serve as the targets for V-SNARES (vesicle-SNAP receptors) permitting specific synaptic vesicle docking and fusion. A microdeletion in the region of chromosome 20 where this gene is located has been associated with pseudohypoparathyroidism type Ib. Multiple transcript variants have been found for this gene. Read-through transcription also exists between this gene and the neighboring downstream aminopeptidase-like 1 (NPEPL1) gene.
Molecular Mass	34.8 kDa
AA Sequence	MATRRLTDAFLLLRNNSIQNRQLLAEQLADDRMALVSGISLDPEAAIGVTKRPPPKW VDGVDEIQYDVGRIKQKMKELASLHDKHLNRPTLDDSSSEEEHAIEITTQEITQLFHRC QRAVQALPSRARACSEQEGRLLGNVVASLAQALQELSTSFRHAQSGYLKRMKNRE ERSQHFFDTSVPLMDDGDDNTLYHRGFTEQLVLEQNTLMVEEREREIRQIVQSIG DLNEIFRDLGAMIVEQGTVLDRIDYNVEQSCIKTEDGLKQLHKAQYQKKNRKMVLILI

 Tel: 1-631-559-9269 1-516-512-3133

 Email: info@creative-biomart.com  Fax: 1-631-938-8127

 45-1 Ramsey Road, Shirley, NY 11967, USA

LFVIIIVLIVVLVGVKSRTRTRPLEQKLISEEDLAANDILDYKDDDDKV

Purity > 80% as determined by SDS-PAGE and Coomassie blue staining

Stability Stable for 3 months from receipt of products under proper storage and handling conditions.

Storage Store at -80 centigrade. Avoid repeated freeze-thaw cycles.

Concentration 50 µg/mL as determined by BCA

Storage Buffer 100 mM glycine, 25 mM Tris-HCl, pH 7.3.

GENE INFORMATION

Gene Name [STX16 syntaxin 16 \[Homo sapiens \(human\) \]](#)

Official Symbol [STX16](#)

Synonyms STX16; syntaxin 16; syntaxin-16; hsyn16; SYN16; MGC90328;

Gene ID [8675](#)

mRNA Refseq [NM_003763](#)

Protein Refseq [NP_003754](#)

MIM [603666](#)

UniProt ID [O14662](#)

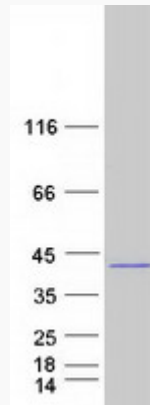
 Tel: 1-631-559-9269 1-516-512-3133

 Email: info@creative-biomart.com  Fax: 1-631-938-8127

 45-1 Ramsey Road, Shirley, NY 11967, USA



SDS-PAGE



Tel: 1-631-559-9269 1-516-512-3133

Email: info@creative-biomart.com Fax: 1-631-938-8127

45-1 Ramsey Road, Shirley, NY 11967, USA