

## Recombinant Human STX1A Protein, His-tagged

Cat. No. STX1A-6375H Lot. No. (See product label)

### SPECIFICATION

<b>Product Overview</b>	Recombinant Human STX1A protein(Met1-Val255), fused with N-terminal His tag, was expressed in E. coli.
<b>Species</b>	Human
<b>Source</b>	E.coli
<b>ProteinLength</b>	Met1-Val255
<b>Tag</b>	N-His
<b>Form</b>	Liquid in sterile PBS, pH7.4.
<b>Molecular Mass</b>	The protein has a calculated MW of 32 kDa.
<b>Endotoxin</b>	<1.0EU per 1µg (determined by the LAL method).
<b>Purity</b>	> 80 % as determined by SDS-PAGE.
<b>Storage</b>	Store it under sterile conditions at -80°C. It is recommended that the protein be aliquoted for optimal storage. Avoid repeated freeze-thaw cycles.
<b>Concentration</b>	1.0 mg/ml.
<b>Reconstitution</b>	Centrifuge the vial at 4°C before opening to recover the entire contents.

 Tel: 1-631-559-9269 1-516-512-3133

 Email: [info@creative-biomart.com](mailto:info@creative-biomart.com)  Fax: 1-631-938-8127

 45-1 Ramsey Road, Shirley, NY 11967, USA

**AA Sequence**

MGSSHHHHHSSGLVPRGSHMMKDRTQELRTAKDSDDDDVAVTVDRDRFMDEF  
 FEQVEEIRGFIDKIAENVEEVKRKHSAILASPNPDEKTKEELEELMSDIKKTANKVRSK  
 LKSIEQSIEQEEGLNRSSADLRIRKTQHSTLSRKFVEVMSEYNATQSDYRERCKGRI  
 QRQLEITGRTTTSEELEDMLESGNPAIFASGIIMDSSISKQALSEIETRHSEIIKLENSIR  
 ELHDMFMDMAMLVESQGEMIDRIEYNVEHAVDYVERAVSDTKKAV

## GENE INFORMATION

**Gene Name** [STX1A syntaxin 1A \(brain\) \[ Homo sapiens \]](#)

**Official Symbol** [STX1A](#)

**Synonyms** [STX1A](#); [syntaxin 1A \(brain\)](#); [STX1](#); [syntaxin-1A](#); [HPC 1](#); [p35 1](#); [neuron-specific antigen HPC-1](#); [HPC-1](#); [P35-1](#); [SYN1A](#);

**Gene ID** [6804](#)

**mRNA Refseq** [NM\\_001165903](#)

**Protein Refseq** [NP\\_001159375](#)

**MIM** [186590](#)

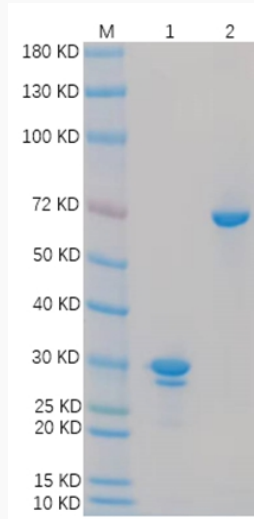
**UniProt ID** [Q16623](#)

 Tel: 1-631-559-9269 1-516-512-3133

 Email: [info@creative-biomart.com](mailto:info@creative-biomart.com)  Fax: 1-631-938-8127

 45-1 Ramsey Road, Shirley, NY 11967, USA

**SDS-PAGE**



 Tel: 1-631-559-9269 1-516-512-3133

 Email: [info@creative-biomart.com](mailto:info@creative-biomart.com)  Fax: 1-631-938-8127

 45-1 Ramsey Road, Shirley, NY 11967, USA