

# Recombinant Full Length Human STX1B Protein, C-Flag-tagged

**Cat. No.** STX1B-492HFL    **Lot. No.** (See product label)

## SPECIFICATION

|                         |   |
|-------------------------|---|
| <b>Product Overview</b> | Recombinant Full Length Human STX1B Protein, fused to Flag-tag at C-terminus, was expressed in Mammalian cells.   |
| <b>Species</b>          | Human   |
| <b>Source</b>           | Mammalian Cells   |
| <b>Description</b>      | The protein encoded by this gene belongs to a family of proteins thought to play a role in the exocytosis of synaptic vesicles. Vesicle exocytosis releases vesicular contents and is important to various cellular functions. For instance, the secretion of transmitters from neurons plays an important role in synaptic transmission. After exocytosis, the membrane and proteins from the vesicle are retrieved from the plasma membrane through the process of endocytosis. Mutations in this gene have been identified as one cause of fever-associated epilepsy syndromes. A possible link between this gene and Parkinson's disease has also been suggested. |
| <b>Form</b>             | 25 mM Tris HCl, pH 7.3, 100 mM glycine, 10% glycerol.   |
| <b>Molecular Mass</b>   | 33.1 kDa  |
| <b>AA Sequence</b>      | MKDRTQELRSAKDSDDDEEEVVHVD RDHFMDEF FEQVEEIRGCIEKLS EDVEQVKKQ<br>HSAILAAPNPDEKT KQELEDLTADIKKTANKVRSK LKAIEQSIEQEEGLNRSSADLRIR<br>KTQHSTLSRKFVEVMTEYNATQSKY RDRCKDRIQRQLEITGR TTTNEELEDMLESG<br>KLAIFTDDIKMDSQMTKQALNEIETRHNEI IKLETSIRE LHDMFVDMAMLVESQGEMI   |

 Tel: 1-631-559-9269    1-516-512-3133

 Email: [info@creative-biomart.com](mailto:info@creative-biomart.com)     Fax: 1-631-938-8127

 45-1 Ramsey Road, Shirley, NY 11967, USA

DRIEYNVEHSVDYVERAVSDTKKAVKYQSKARRKKIMIIICCVVLGVVLAS  
SIGGTLGLTRTRPLEQKLISEEDLAANDILDYKDDDDKV

|                         |   |
|-------------------------|---|
| <b>Purity</b>           | > 80% as determined by SDS-PAGE and Coomassie blue staining.  |
| <b>Stability</b>        | Stable for 12 months from the date of receipt of the product under proper storage and handling conditions. Avoid repeated freeze-thaw cycles. |
| <b>Storage</b>          | Store at -80 centigrade.  |
| <b>Concentration</b>    | >50 ug/mL as determined by microplate BCA method.   |
| <b>Preparation</b>      | Recombinant protein was captured through anti-DDK affinity column followed by conventional chromatography steps.                              |
| <b>Protein Families</b> | Druggable Genome, Transmembrane   |
| <b>Protein Pathways</b> | SNARE interactions in vesicular transport   |
| <b>Full Length</b>      | Full L.   |

## GENE INFORMATION

|                        |  |
|------------------------|--|
| <b>Gene Name</b>       | STX1B syntaxin 1B [ Homo sapiens (human) ] |
| <b>Official Symbol</b> | STX1B                                      |
| <b>Synonyms</b>        | GEFSP9; STX1B1; STX1B2                     |
| <b>Gene ID</b>         | 112755                                     |

 Tel: 1-631-559-9269 1-516-512-3133

 Email: [info@creative-biomart.com](mailto:info@creative-biomart.com)  Fax: 1-631-938-8127

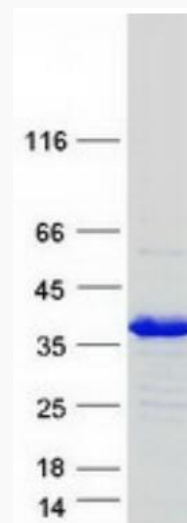
 45-1 Ramsey Road, Shirley, NY 11967, USA

mRNA Refseq [NM\\_052874.5](#)

Protein Refseq [NP\\_443106.1](#)

MIM [601485](#)

UniProt ID [P61266](#)



Coomassie blue staining of purified STX1B protein.

 Tel: 1-631-559-9269 1-516-512-3133

 Email: [info@creative-biomart.com](mailto:info@creative-biomart.com)  Fax: 1-631-938-8127

 45-1 Ramsey Road, Shirley, NY 11967, USA