

# Recombinant Human STX2 Protein, Myc/DDK-tagged, C13 and N15-labeled

**Cat. No.** STX2-1546H    **Lot. No.** (See product label)

## SPECIFICATION

<b>Product Overview</b>	STX2 MS Standard C13 and N15-labeled recombinant protein (NP_919337) with a C-terminal MYC/DDK tag, was expressed in HEK293 cells.
<b>Species</b>	Human
<b>Source</b>	HEK293
<b>Description</b>	The product of this gene belongs to the syntaxin/epimorphin family of proteins. The syntaxins are a large protein family implicated in the targeting and fusion of intracellular transport vesicles. The product of this gene regulates epithelial-mesenchymal interactions and epithelial cell morphogenesis and activation. Alternatively spliced transcript variants encoding different isoforms have been identified.
<b>Molecular Mass</b>	33.2 kDa
<b>AA Sequence</b>	MRDRLPDLTACRKNDDGDTVVVVEKDHFMDDFFHQVEEIRNTIDKITQYVEEVKKNH SIILSAPNPEGKIKEELEDLNKEIKKTANKIRAKLKAIEQSFQDESGNRTSVDLRIRRT QHSVLSRKFVEAMA EYNEAQTFRERSKGR IQRQLEITGR TTTDDELEEMLESGKPS IFTSDIISDSQITRQALNEIESRHKDIMKLETSIRELHEMFMDMAMFVETQGEMINNIER NVMNATDYVEHAKEETKKAIKYQSKARRKKWIIIVSVVLVAIIALIIGLSVGKTRTRPL EQKLISEEDLAANDILDYKDDDDKV
<b>Purity</b>	> 80% as determined by SDS-PAGE and Coomassie blue staining

 Tel: 1-631-559-9269    1-516-512-3133


 Email: [info@creative-biomart.com](mailto:info@creative-biomart.com)     Fax: 1-631-938-8127

 45-1 Ramsey Road, Shirley, NY 11967, USA

<b>Stability</b>	Stable for 3 months from receipt of products under proper storage and handling conditions.
<b>Storage</b>	Store at -80 centigrade. Avoid repeated freeze-thaw cycles.
<b>Concentration</b>	50 µg/mL as determined by BCA
<b>Storage Buffer</b>	100 mM glycine, 25 mM Tris-HCl, pH 7.3.

## GENE INFORMATION

<b>Gene Name</b>	<a href="#">STX2 syntaxin 2 [ Homo sapiens (human) ]</a>
<b>Official Symbol</b>	<a href="#">STX2</a>
<b>Synonyms</b>	STX2; syntaxin 2; EPIM, epimorphin, STX2A, STX2B, STX2C; syntaxin-2; EPM; epimorphin; EPIM; STX2A; STX2B; STX2C; MGC51014;
<b>Gene ID</b>	<a href="#">2054</a>
<b>mRNA Refseq</b>	<a href="#">NM_194356</a>
<b>Protein Refseq</b>	<a href="#">NP_919337</a>
<b>MIM</b>	<a href="#">132350</a>
<b>UniProt ID</b>	<a href="#">P32856</a>

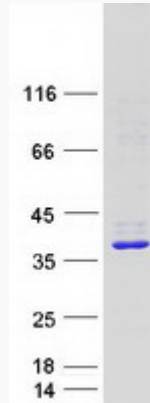
 Tel: 1-631-559-9269 1-516-512-3133

 Email: [info@creative-biomart.com](mailto:info@creative-biomart.com)  Fax: 1-631-938-8127

 45-1 Ramsey Road, Shirley, NY 11967, USA



SDS-PAGE



Tel: 1-631-559-9269 1-516-512-3133

Email: [info@creative-biomart.com](mailto:info@creative-biomart.com) Fax: 1-631-938-8127

45-1 Ramsey Road, Shirley, NY 11967, USA