

Recombinant Human STX2 Protein, GST-tagged

Cat. No. STX2-4046H Lot. No. (See product label)

SPECIFICATION

Product Overview	Human EPIM full-length ORF (NP_001971.2, 1 a.a. - 287 a.a.) recombinant protein with GST-tag at N-terminal.
Species	Human
Source	Wheat Germ
Description	The product of this gene belongs to the syntaxin/epimorphin family of proteins. The syntaxins are a large protein family implicated in the targeting and fusion of intracellular transport vesicles. The product of this gene regulates epithelial-mesenchymal interactions and epithelial cell morphogenesis and activation. Alternatively spliced transcript variants encoding different isoforms have been identified. [provided by RefSeq, Jul 2008]
Molecular Mass	59.7 kDa
AA Sequence	MRDRLPDLTACRKNDDGDTVVVVEKDHFMDDFFHQVEEIRNSIDKITQYVEEVKKN HSIILSAPNPEGKIKEELEDLNKEIKKTANKIRAKLKAIEQSFQDESGNRTSVDLRIRR TQHSVLSRKFVEAMA EYNEAQTFRERSKGRIQRQLEITGRTTTTDDELEEMLESGKP SIFTSDIISDSQITRQALNEIESRHKDIMKLETSIRELHEMFMDMAMFVETQGEMINNIE RNVMNATDYVEHAKEETKKAIKYQSKARRKLMFIICVIVLLVILGILATTLS
Applications	Enzyme-linked Immunoabsorbent Assay Western Blot (Recombinant protein) Antibody Production

 Tel: 1-631-559-9269 1-516-512-3133

 Email: info@creative-biomart.com  Fax: 1-631-938-8127

 45-1 Ramsey Road, Shirley, NY 11967, USA

Protein Array

Notes	Best use within three months from the date of receipt of this protein.
Storage	Store at -80 centigrade. Aliquot to avoid repeated freezing and thawing.
Storage Buffer	50 mM Tris-HCl, 10 mM reduced Glutathione, pH=8.0 in the elution buffer.

GENE INFORMATION

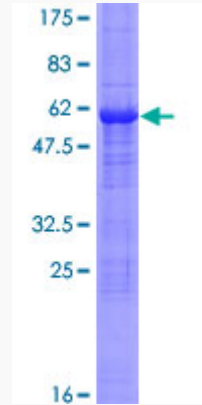
Gene Name	STX2 syntaxin 2 [Homo sapiens]
Official Symbol	STX2
Synonyms	STX2; syntaxin 2; EPIM, epimorphin , STX2A, STX2B, STX2C; syntaxin-2; EPM; epimorphin; EPIM; STX2A; STX2B; STX2C; MGC51014;
Gene ID	2054
mRNA Refseq	NM_194356
Protein Refseq	NP_919337
MIM	132350
UniProt ID	P32856

 Tel: 1-631-559-9269 1-516-512-3133

 Email: info@creative-biomart.com  Fax: 1-631-938-8127

 45-1 Ramsey Road, Shirley, NY 11967, USA

**Quality Control
Testing**



12.5% SDS-PAGE Stained with Coomassie Blue.

 Tel: 1-631-559-9269 1-516-512-3133

 Email: info@creative-biomart.com  Fax: 1-631-938-8127

 45-1 Ramsey Road, Shirley, NY 11967, USA