

Recombinant Chicken STX6 Protein (4-231 aa), His-tagged

Cat. No. STX6-2329C Lot. No. (See product label)

SPECIFICATION

Product Overview	Recombinant Chicken STX6 Protein (4-231 aa) is produced by E. coli expression system. This protein is fused with a 6xHis tag at the N-terminal. Protein Description: Partial.
Species	Chicken
Source	E.coli
ProteinLength	4-231 aa
Description	Involved in intracellular vesicle trafficking.
Form	Tris-based buffer,50% glycerol
Molecular Mass	30.1 kDa
AA Sequence	EDPFFVVKGEVQKAVNTAQGLFQRWTELLQDPSIATREEIDWTTNELRNNLRSIEWD LEDLDETISIVEANPRKFNLDATELGIRKSFITSTRQVVREMKDQMSNSSMQALAERK NRQALLGESSSQSWSSGPDKYSRLDRELQLANSHFIEEQQAQQQLLIVEQQDEQLEL VSGSIGVLKNMSQRIGGELEEQAVMLDDFSHELDSTHSRLDNVMKKLAKVSHMTSD R
Purity	> 90% as determined by SDS-PAGE.
Notes	Repeated freezing and thawing is not recommended. Store working aliquots at 4

 Tel: 1-631-559-9269 1-516-512-3133

 Email: info@creative-biomart.com  Fax: 1-631-938-8127

 45-1 Ramsey Road, Shirley, NY 11967, USA

centigrade for up to one week.

Storage

The shelf life is related to many factors, storage state, buffer ingredients, storage temperature and the stability of the protein itself. Generally, the shelf life of liquid form is 6 months at -20 centigrade/-80 centigrade. The shelf life of lyophilized form is 12 months at -20 centigrade/-80 centigrade.

Concentration

A hardcopy of COA will be sent along with the products. Please refer to it for detailed information.

GENE INFORMATION

Gene Name [STX10 syntaxin 10 \[Gallus gallus \(chicken\) \]](#)

Official Symbol [STX6](#)

Synonyms STX6; STX6; syntaxin-6;

Gene ID [424413](#)

mRNA Refseq [NM_001006531](#)

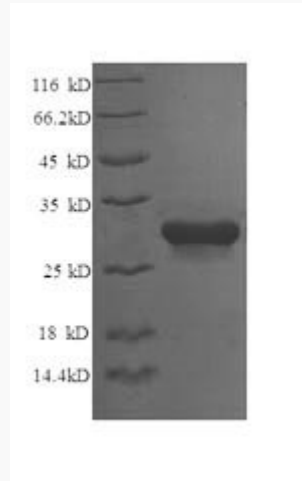
Protein Refseq [NP_001006531](#)

UniProt ID [Q5ZL19](#)

 Tel: 1-631-559-9269 1-516-512-3133

 Email: info@creative-biomart.com  Fax: 1-631-938-8127

 45-1 Ramsey Road, Shirley, NY 11967, USA



(Tris-Glycine gel) Discontinuous SDS-PAGE (reduced) with 5% enrichment gel and 15% separation gel.

 Tel: 1-631-559-9269 1-516-512-3133

 Email: info@creative-biomart.com  Fax: 1-631-938-8127

 45-1 Ramsey Road, Shirley, NY 11967, USA