

## Recombinant Human STX8 Protein (Met1-Gly215)

Cat. No. STX8-6705H Lot. No. (See product label)

### SPECIFICATION

<b>Product Overview</b>	Recombinant human STX8 (Met1-Gly215) without tag was expressed in E. coli.
<b>Species</b>	Human
<b>Source</b>	E.coli
<b>ProteinLength</b>	Met1-Gly215
<b>Form</b>	Lyophilized powder/frozen liquid
<b>Molecular Mass</b>	23.65 kDa
<b>Purity</b>	> 90 % as determined by SDS-PAGE
<b>Notes</b>	For research use only.
<b>Storage</b>	Use a manual defrost freezer and avoid repeated freeze thaw cycles. Store at 2 to 8 centigrade for one week. Store at -20 to -80 centigrade for twelve months from the date of receipt.
<b>Storage Buffer</b>	Supplied as solution form in PBS or lyophilized from PBS.
<b>Reconstitution</b>	Reconstitute in sterile water for a stock solution.
<b>Shipping</b>	They are shipped out with dry ice/blue ice unless customers require otherwise.

 Tel: 1-631-559-9269 1-516-512-3133

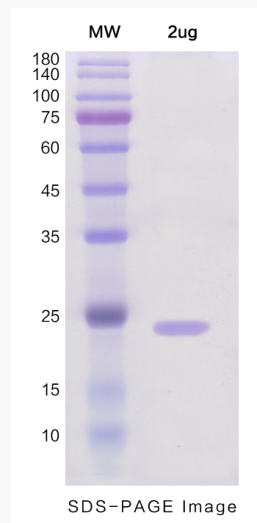
 Email: [info@creative-biomart.com](mailto:info@creative-biomart.com)  Fax: 1-631-938-8127

 45-1 Ramsey Road, Shirley, NY 11967, USA

## GENE INFORMATION

<b>Gene Name</b>	STX8 syntaxin 8 [ Homo sapiens (human) ]
<b>Official Symbol</b>	STX8
<b>Synonyms</b>	STX8; syntaxin 8; syntaxin-8; CARB; CIP-1-associated regulator of cyclin B;
<b>Gene ID</b>	9482
<b>mRNA Refseq</b>	NM_004853
<b>Protein Refseq</b>	NP_004844
<b>MIM</b>	604203
<b>UniProt ID</b>	Q9UNK0

### SDS-PAGE



Tel: 1-631-559-9269 1-516-512-3133

Email: [info@creative-biomart.com](mailto:info@creative-biomart.com) Fax: 1-631-938-8127

45-1 Ramsey Road, Shirley, NY 11967, USA