

Recombinant Full Length Human SUB1 Protein, C-Flag-tagged

Cat. No. SUB1-2181HFL Lot. No. (See product label)

SPECIFICATION

Product Overview	Recombinant Full Length Human SUB1 Protein, fused to Flag-tag at C-terminus, was expressed in Mammalian cells.
Species	Human
Source	Mammalian Cells
Description	Enables identical protein binding activity; single-stranded DNA binding activity; and transcription coactivator activity. Involved in negative regulation of DNA metabolic process and regulation of transcription by RNA polymerase II. Located in nucleolus and nucleoplasm. Part of transcription regulator complex.
Form	25 mM Tris HCl, pH 7.3, 100 mM glycine, 10% glycerol.
Molecular Mass	14.2 kDa
AA Sequence	MPKSKELVSSSSSGSDSDSEVDKCLKRKKQVAPEKPVKKQKTGETSRALSSSKQSS SSRDDNMFQIGKMR YVSVRDFKGVLDIREYWMDPEGEMKPRKGISLNPEQWS QLKEQISDIDDAVRKL TRTRPLEQKLISEEDLAANDILDYKDDDDKV
Purity	> 80% as determined by SDS-PAGE and Coomassie blue staining.
Stability	Stable for 12 months from the date of receipt of the product under proper storage and handling conditions. Avoid repeated freeze-thaw cycles.

 Tel: 1-631-559-9269 1-516-512-3133

 Email: info@creative-biomart.com  Fax: 1-631-938-8127

 45-1 Ramsey Road, Shirley, NY 11967, USA

Storage	Store at -80 centigrade.
Concentration	>50 ug/mL as determined by microplate BCA method.
Preparation	Recombinant protein was captured through anti-DDK affinity column followed by conventional chromatography steps.
Protein Families	Transcription Factors
Full Length	Full L.

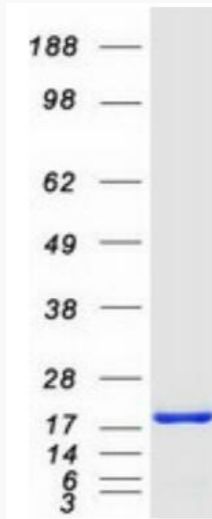
GENE INFORMATION

Gene Name	SUB1 SUB1 regulator of transcription [Homo sapiens (human)]
Official Symbol	SUB1
Synonyms	P15; PC4; p14
Gene ID	10923
mRNA Refseq	NM_006713.4
Protein Refseq	NP_006704.3
MIM	600503
UniProt ID	P53999

 Tel: 1-631-559-9269 1-516-512-3133

 Email: info@creative-biomart.com  Fax: 1-631-938-8127

 45-1 Ramsey Road, Shirley, NY 11967, USA



Coomassie blue staining of purified SUB1 protein.

 Tel: 1-631-559-9269 1-516-512-3133

 Email: info@creative-biomart.com  Fax: 1-631-938-8127

 45-1 Ramsey Road, Shirley, NY 11967, USA