

Recombinant Human SUB1 Protein, Myc/DDK-tagged, C13 and N15-labeled

Cat. No. SUB1-3417H **Lot. No.** (See product label)

SPECIFICATION

Product Overview	SUB1 MS Standard C13 and N15-labeled recombinant protein (NP_006704) with a C-terminal MYC/DDK tag, was expressed in HEK293 cells.
Species	Human
Source	HEK293
Description	General coactivator that functions cooperatively with TAFs and mediates functional interactions between upstream activators and the general transcriptional machinery. May be involved in stabilizing the multiprotein transcription complex. Binds single-stranded DNA. Also binds, in vitro, non-specifically to double-stranded DNA (ds DNA).
Molecular Mass	14.4 kDa
AA Sequence	MPKSKELVSSSSSGSDSDSEVDKCLKRKKQVAPEKPVKKQKTGETSRALSSSKQSS SSRDDNMFQIGKMYVSVRDFKGVLLIDIREYWMDPEGEMKPGRKGISLNPEQWS QLKEQISDIDDAVRKLRTRTRPLEQKLISEEDLAANDILDYKDDDDKV
Purity	> 80% as determined by SDS-PAGE and Coomassie blue staining
Stability	Stable for 3 months from receipt of products under proper storage and handling conditions.
Storage	Store at -80 centigrade. Avoid repeated freeze-thaw cycles.

 Tel: 1-631-559-9269 1-516-512-3133

 Email: info@creative-biomart.com  Fax: 1-631-938-8127

 45-1 Ramsey Road, Shirley, NY 11967, USA

Concentration 50 µg/mL as determined by BCA

Storage Buffer 100 mM glycine, 25 mM Tris-HCl, pH 7.3.

GENE INFORMATION

Gene Name SUB1 SUB1 regulator of transcription [Homo sapiens (human)]

Official Symbol SUB1

Synonyms SUB1; SUB1 homolog (S. cerevisiae); activated RNA polymerase II transcriptional coactivator p15; p14; p15; PC4; positive cofactor 4; activated RNA polymerase II transcription cofactor 4; P15; MGC102747;

Gene ID 10923

mRNA Refseq NM_006713

Protein Refseq NP_006704

MIM 600503

UniProt ID P53999

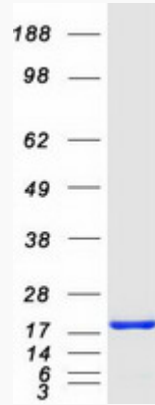
 Tel: 1-631-559-9269 1-516-512-3133

 Email: info@creative-biomart.com  Fax: 1-631-938-8127

 45-1 Ramsey Road, Shirley, NY 11967, USA



SDS-PAGE



Tel: 1-631-559-9269 1-516-512-3133

Email: info@creative-biomart.com Fax: 1-631-938-8127

45-1 Ramsey Road, Shirley, NY 11967, USA