

Recombinant Human SUGT1 Protein, MYC/DDK-tagged, C13 and N15-labeled

Cat. No. SUGT1-404H Lot. No. (See product label)

SPECIFICATION

Product Overview	SUGT1 MS Standard C13 and N15-labeled recombinant protein (NP_006695) with a C-terminal MYC/DDK tag, was expressed in HEK293 cells.
Species	Human
Source	HEK293
Description	This gene encodes a highly conserved nuclear protein involved in kinetochore function and required for the G1/S and G2/M transitions. This protein interacts with heat shock protein 90. Alternative splicing results in multiple transcript variants. Pseudogenes for this gene have been defined on several different chromosomes. [provided by RefSeq, Mar 2016]
Molecular Mass	37.8 kDa
AA Sequence	MAAAAAGTATSQRFFQSFS DALIDEDPQA ALEELTKALEQKPDDAQYYCQRAYCHIL LGNYCVAVADAKKSLELNPNNSTAMLRKGICEYHEKNYAAALETFTGQKLD SADA NFSVWIKRCQEAQNGSESEVWTHQSKIKYD WYQTESQVVITLMIKNVQKNDVNVEF SEKELSALVKLPSGEDYNLKLLELLHPIIPEQSTFKVLSTKIEIKLKKPEAVRWEKLEGQ GDVPTPKQFVADVKNLYPSSSPYTRNWDKLVGEIKEEEKNEKLEGDAALNRLFQQIY SDGSDEVKRAMNKSFMESGGTVLSTNWS DVGKRKVEINPPDDMEWKYTRTRPLE QKLISEEDLAANDILDYKDDDDKV
Purity	> 80% as determined by SDS-PAGE and Coomassie blue staining

 Tel: 1-631-559-9269 1-516-512-3133

 Email: info@creative-biomart.com  Fax: 1-631-938-8127

 45-1 Ramsey Road, Shirley, NY 11967, USA

Stability	Stable for 3 months from receipt of products under proper storage and handling conditions.
Storage	Store at -80 centigrade. Avoid repeated freeze-thaw cycles.
Concentration	50 µg/mL as determined by BCA
Storage Buffer	100 mM glycine, 25 mM Tris-HCl, pH 7.3.

GENE INFORMATION

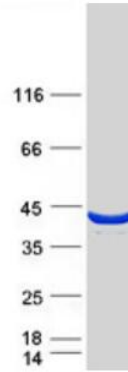
Gene Name	SUGT1 SGT1, suppressor of G2 allele of SKP1 (<i>S. cerevisiae</i>) [<i>Homo sapiens</i> (human)]
Official Symbol	SUGT1
Synonyms	SUGT1; SGT1, suppressor of G2 allele of SKP1 (<i>S. cerevisiae</i>); suppressor of G2 allele of SKP1 homolog; SGT1; SGT1B protein; putative 40-6-3 protein; suppressor of G2 allele of SKP1, <i>S. cerevisiae</i> , homolog of;
Gene ID	10910
mRNA Refseq	NM_006704
Protein Refseq	NP_006695
MIM	604098
UniProt ID	Q9Y2Z0

 Tel: 1-631-559-9269 1-516-512-3133

 Email: info@creative-biomart.com  Fax: 1-631-938-8127

 45-1 Ramsey Road, Shirley, NY 11967, USA

SDS-PAGE



 Tel: 1-631-559-9269 1-516-512-3133

 Email: info@creative-biomart.com  Fax: 1-631-938-8127

 45-1 Ramsey Road, Shirley, NY 11967, USA