

Recombinant Human SUGT1 Protein, Myc/DDK-tagged, C13 and N15-labeled

Cat. No. SUGT1-5155H Lot. No. (See product label)

SPECIFICATION

Product Overview	SUGT1 MS Standard C13 and N15-labeled recombinant protein (NP_001124384) with a C-terminal MYC/DDK tag, was expressed in HEK293 cells.
Species	Human
Source	HEK293
Description	This gene encodes a highly conserved nuclear protein involved in kinetochore function and required for the G1/S and G2/M transitions. This protein interacts with heat shock protein 90. Alternative splicing results in multiple transcript variants. Pseudogenes for this gene have been defined on several different chromosomes.
Molecular Mass	40.8 kDa
AA Sequence	MAAAAAGTATSQRFFQSFSDALIDEDPQAAL EELTKALEQKPDDAQYYCQRAYCHIL LGNVCVAVADAKKSLELNPNNSTAMLRKGICEYHEKNYAAALETFTGQKLDIETGF HRVGQAGLQLLTSSDPPALDSQSAGITGADANFSVWIKRCQEAQNGSESEVWTHQ SKIKYDWYQTESQVVITLMIKNVQKNDVNVEFSEKELSALVKLPSGEDYNLKLLELHP IIEPQSTFKVLSTKIEIKLKKPEAVRWEKLEGQGDVPTPKQFVADVKNLYPSSSPYTR NWDKLVGEIKKKEKNEKLEGDAALNRLFQQIYSDGSDEVKRAMNKSFMESGGTVLS TNWSDVGKRKVEINPPDDMEWKYTRTRPLEQKLISEEDLAANDILDYKDDDDKV
Purity	> 80% as determined by SDS-PAGE and Coomassie blue staining

 Tel: 1-631-559-9269 1-516-512-3133

 Email: info@creative-biomart.com  Fax: 1-631-938-8127

 45-1 Ramsey Road, Shirley, NY 11967, USA

Stability	Stable for 3 months from receipt of products under proper storage and handling conditions.
Storage	Store at -80 centigrade. Avoid repeated freeze-thaw cycles.
Concentration	50 µg/mL as determined by BCA
Storage Buffer	100 mM glycine, 25 mM Tris-HCl, pH 7.3.

GENE INFORMATION

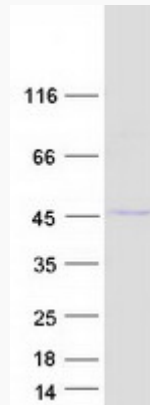
Gene Name	SUGT1 SGT1 homolog, MIS12 kinetochore complex assembly cochaperone [Homo sapiens (human)]
Official Symbol	SUGT1
Synonyms	SUGT1; SGT1, suppressor of G2 allele of SKP1 (S. cerevisiae); suppressor of G2 allele of SKP1 homolog; SGT1; SGT1B protein; putative 40-6-3 protein; suppressor of G2 allele of SKP1, S. cerevisiae, homolog of;
Gene ID	10910
mRNA Refseq	NM_001130912
Protein Refseq	NP_001124384
MIM	604098
UniProt ID	Q9Y2Z0

 Tel: 1-631-559-9269 1-516-512-3133

 Email: info@creative-biomart.com  Fax: 1-631-938-8127

 45-1 Ramsey Road, Shirley, NY 11967, USA

SDS-PAGE



 Tel: 1-631-559-9269 1-516-512-3133

 Email: info@creative-biomart.com  Fax: 1-631-938-8127

 45-1 Ramsey Road, Shirley, NY 11967, USA