

Recombinant Human SULF1 Protein, His tagged

Cat. No. SULF1-15H Lot. No. (See product label)

SPECIFICATION

Product Overview	Purified recombinant protein of Human sulfatase 1 (SULF1), transcript variant 3, Gln487-Cys746, with N-terminal His tag, expressed in E. coli.
Species	Human
Source	E.coli
ProteinLength	487-746 aa
Description	This gene encodes an extracellular heparan sulfate endosulfatase. The encoded enzyme selectively removes 6-O-sulfate groups from heparan sulfate chains of heparan sulfate proteoglycans (HSPGs). The enzyme is secreted through the Golgi and is subsequently localized to the cell surface. The expression of this gene may be down-regulated in several types of cancer, including hepatocellular (HCC), ovarian and breast cancers. Alternative splicing results in multiple transcript variants.
Molecular Mass	30.6 kDa
Purity	> 80% as determined by SDS-PAGE and Coomassie blue staining
Note	For testing in cell culture applications, please filter before use. Note that you may experience some loss of protein during the filtration process.
Stability	Stable for 12 months from the date of receipt of the product under proper storage and handling conditions. Avoid repeated freeze-thaw cycles.

 Tel: 1-631-559-9269 1-516-512-3133

 Email: info@creative-biomart.com  Fax: 1-631-938-8127

 45-1 Ramsey Road, Shirley, NY 11967, USA

Storage	Store at -80 centigrade.
Storage Buffer	50 mM Tris-HCl, pH 8.0, 8 M urea
Concentration	> 0.05 µg/µL as determined by microplate BCA method
Shipping	Dry Ice

GENE INFORMATION

Gene Name	SULF1 sulfatase 1 [Homo sapiens (human)]
Official Symbol	SULF1
Synonyms	SULF1; sulfatase 1; extracellular sulfatase Sulf-1; KIAA1077; SULF 1; sulfatase FP; SULF-1; HSULF-1; FLJ30905; FLJ38022; FLJ41750;
Gene ID	23213
mRNA Refseq	NM_015170
Protein Refseq	NP_055985
MIM	610012
UniProt ID	Q8IWU6

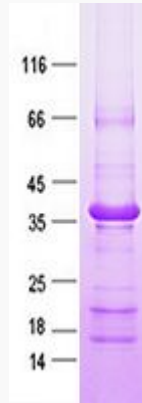
 Tel: 1-631-559-9269 1-516-512-3133

 Email: info@creative-biomart.com  Fax: 1-631-938-8127

 45-1 Ramsey Road, Shirley, NY 11967, USA



SDS-PAGE and WB



Tel: 1-631-559-9269 1-516-512-3133

Email: info@creative-biomart.com Fax: 1-631-938-8127

45-1 Ramsey Road, Shirley, NY 11967, USA