

Recombinant Human SULF1 Protein, His/GST-tagged

Cat. No. SULF1-667H **Lot. No.** (See product label)

SPECIFICATION

Product Overview	Recombinant Human SULF1(Pro609~Gly871) fused with His/GST tag at N-terminal was expressed in E. coli.
Species	Human
Source	E.coli
ProteinLength	Pro609~Gly871
Description	This gene encodes an extracellular heparan sulfate endosulfatase. The encoded enzyme selectively removes 6-O-sulfate groups from heparan sulfate chains of heparan sulfate proteoglycans (HSPGs). The enzyme is secreted through the Golgi and is subsequently localized to the cell surface. The expression of this gene may be down-regulated in several types of cancer, including hepatocellular (HCC), ovarian and breast cancers. Alternative splicing results in multiple transcript variants.
Form	20mM Tris, 150mM NaCl, pH8.0, containing 1mM EDTA, 1mM DTT, 0.01% SKL, 5% Trehalose and Proclin300.
Molecular Mass	61.08kDa
Endotoxin	<1.0EU per 1g (determined by the LAL method)
Purity	> 95%

 Tel: 1-631-559-9269 1-516-512-3133

 Email: info@creative-biomart.com  Fax: 1-631-938-8127

 45-1 Ramsey Road, Shirley, NY 11967, USA

Applications	Positive Control; Immunogen; SDS-PAGE; WB. If bio-activity of the protein is needed, please check active protein.
Stability	The thermal stability is described by the loss rate. The loss rate was determined by accelerated thermal degradation test, that is, incubate the protein at 37 centigrade for 48h, and no obvious degradation and precipitation were observed. The loss rate is less than 5% within the expiration date under appropriate storage condition.
Storage	Avoid repeated freeze/thaw cycles. Store at 2-8 centigrade for one month. Aliquot and store at -80 centigrade for 12 months.
Reconstitution	Reconstitute in 20mM Tris, 150mM NaCl (pH8.0) to a concentration of 0.1-1.0 mg/mL. Do not vortex.

GENE INFORMATION

Gene Name	SULF1 sulfatase 1 [Homo sapiens]
Official Symbol	SULF1
Synonyms	SULF1; sulfatase 1; extracellular sulfatase Sulf-1; KIAA1077; SULF 1; sulfatase FP; SULF-1; HSULF-1; FLJ30905; FLJ38022; FLJ41750;
Gene ID	23213
mRNA Refseq	NM_001128204
Protein Refseq	NP_001121676
MIM	610012

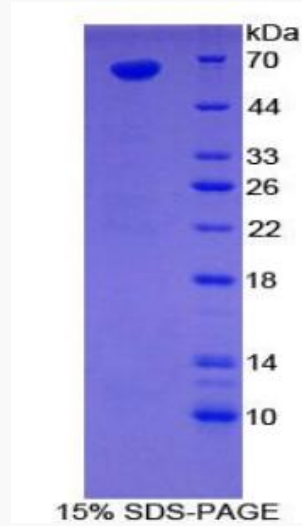
 Tel: 1-631-559-9269 1-516-512-3133

 Email: info@creative-biomart.com  Fax: 1-631-938-8127

 45-1 Ramsey Road, Shirley, NY 11967, USA

UniProt ID

Q8IWU6



 Tel: 1-631-559-9269 1-516-512-3133

 Email: info@creative-biomart.com  Fax: 1-631-938-8127

 45-1 Ramsey Road, Shirley, NY 11967, USA