

Recombinant Human SULT1A1 Protein, DYKDDDDK-tagged

Cat. No. SULT1A1-25H Lot. No. (See product label)

SPECIFICATION

Product Overview	Recombinant protein from the full-length sequence of homo sapiens sulfotransferase family 1A member 1 (SULT1A1), transcript variant 1 (NM_001055), with a DYKDDDDK tag was expressed in human cells.
Species	Human
Source	Human Cells
Description	Sulfotransferase enzymes catalyze the sulfate conjugation of many hormones, neurotransmitters, drugs, and xenobiotic compounds. These cytosolic enzymes are different in their tissue distributions and substrate specificities. The gene structure (number and length of exons) is similar among family members. This gene encodes one of two phenol sulfotransferases with thermostable enzyme activity. Multiple alternatively spliced variants that encode two isoforms have been identified for this gene.
Molecular Mass	37 kDa
Endotoxin	< 0.1 ng/ µg of protein (< 1 EU/ µg)
Purity	> 90% by SDS-PAGE gel and Coomassie Blue staining
Applications	Antigens, Western, ELISA and other in vitro binding or in vivo functional assays, and protein-protein interaction studies; For research & development use only!

 Tel: 1-631-559-9269 1-516-512-3133

 Email: info@creative-biomart.com  Fax: 1-631-938-8127

 45-1 Ramsey Road, Shirley, NY 11967, USA

Storage Buffer Purified protein formulated in a sterile solution of PBS buffer, pH7.2, without any preservatives

GENE INFORMATION

Gene Name SULT1A1 sulfotransferase family 1A member 1 [Homo sapiens (human)]

Official Symbol SULT1A1 sulfotransferase family 1A member 1 [Homo sapiens (human)]

Synonyms SULT1A1; sulfotransferase family 1A member 1; PST; STP; STP1; P-PST; ST1A1; ST1A3; TSPST1; ts-PST; P-PST 1; HAST1/HAST2; sulfotransferase 1A1; aryl sulfotransferase 1; phenol-sulfating phenol sulfotransferase 1; sulfotransferase family, cytosolic, 1A, phenol-preferring, member 1; thermostable phenol sulfotransferase1; EC 2.8.2.1

Gene ID 6817

mRNA Refseq NM_001055

Protein Refseq NP_001046

MIM 171150

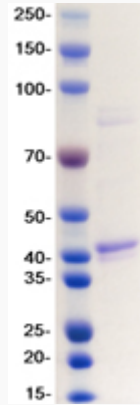
UniProt ID P50225

 Tel: 1-631-559-9269 1-516-512-3133

 Email: info@creative-biomart.com  Fax: 1-631-938-8127

 45-1 Ramsey Road, Shirley, NY 11967, USA

SDS-PAGE



 Tel: 1-631-559-9269 1-516-512-3133

 Email: info@creative-biomart.com  Fax: 1-631-938-8127

 45-1 Ramsey Road, Shirley, NY 11967, USA