

Recombinant Human SULT1A1 Protein, Myc/DDK-tagged, C13 and N15-labeled

Cat. No. SULT1A1-4738H Lot. No. (See product label)

SPECIFICATION

Product Overview

SULT1A1 MS Standard C13 and N15-labeled recombinant protein (NP_803566) with a C-terminal MYC/DDK tag, was expressed in HEK293 cells.

Species

Human

Source

HEK293

Description

Sulfotransferase enzymes catalyze the sulfate conjugation of many hormones, neurotransmitters, drugs, and xenobiotic compounds. These cytosolic enzymes are different in their tissue distributions and substrate specificities. The gene structure (number and length of exons) is similar among family members. This gene encodes one of two phenol sulfotransferases with thermostable enzyme activity. Multiple alternatively spliced variants that encode two isoforms have been identified for this gene.

Molecular Mass

34.2 kDa

AA Sequence

MELIQDTSRPPLEYVKGVPLIKYFAEALGPLQSFQARPDDLSTYPKSGTTWVSQIL
 DMIYQGGDLEKCHRAPIFMRVPFLEFKAPGIPSGMETLKDTPAPRLLKTHLPLALLPQ
 TLLDQKVKVVYVARNAKDVAVSYYHFYHMAKVHPEPGTWDSFLEKFMVGEVSYGS
 WYQHVQEWELSRTHPVLVLYFYEDMKENPKREIQKILEFVGRSLPEETVDFMVQHT
 SFKEMKKNPMTNYTTVPQEFMDHSISPFMRKGMAGDWKTTFTVAQNERFDADYAE
 KMAGCSLSFRSELTRTRPLEQKLISEEDLAANDILDYKDDDDKV

 Tel: 1-631-559-9269 1-516-512-3133

 Email: info@creative-biomart.com  Fax: 1-631-938-8127

 45-1 Ramsey Road, Shirley, NY 11967, USA

Purity	> 80% as determined by SDS-PAGE and Coomassie blue staining
Stability	Stable for 3 months from receipt of products under proper storage and handling conditions.
Storage	Store at -80 centigrade. Avoid repeated freeze-thaw cycles.
Concentration	50 µg/mL as determined by BCA
Storage Buffer	100 mM glycine, 25 mM Tris-HCl, pH 7.3.

GENE INFORMATION

Gene Name	SULT1A1 sulfotransferase family 1A member 1 [Homo sapiens (human)]
Official Symbol	SULT1A1
Synonyms	SULT1A1; sulfotransferase family, cytosolic, 1A, phenol-preferring, member 1; STP, STP1; sulfotransferase 1A1; P PST; ts-PST; P-PST 1; aryl sulfotransferase 1; thermostable phenol sulfotransferase1; phenol-sulfating phenol sulfotransferase 1; PST; STP; STP1; P-PST; ST1A1; ST1A3; TSPST1; HAST1/HAST2; MGC5163; MGC131921;
Gene ID	6817
mRNA Refseq	NM_177530
Protein Refseq	NP_803566
MIM	171150

 Tel: 1-631-559-9269 1-516-512-3133

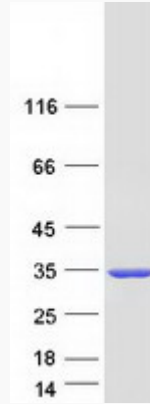
 Email: info@creative-biomart.com  Fax: 1-631-938-8127

 45-1 Ramsey Road, Shirley, NY 11967, USA

UniProt ID

P50225

SDS-PAGE



 Tel: 1-631-559-9269 1-516-512-3133

 Email: info@creative-biomart.com  Fax: 1-631-938-8127

 45-1 Ramsey Road, Shirley, NY 11967, USA