

Recombinant Human SULT1A1 Protein (Met1-Leu295), N-His tagged

Cat. No. SULT1A1-6377H Lot. No. (See product label)

SPECIFICATION

Product Overview	Recombinant human SULT1A1 (Met1-Leu295) fused with the N-terminal His tag was expressed in E. coli.
Species	Human
Source	E.coli
ProteinLength	Met1-Leu295
Form	Lyophilized powder/frozen liquid
Molecular Mass	32.45 kDa
Purity	> 90 % as determined by SDS-PAGE
Notes	For research use only.
Storage	Use a manual defrost freezer and avoid repeated freeze thaw cycles. Store at 2 to 8 centigrade for one week. Store at -20 to -80 centigrade for twelve months from the date of receipt.
Storage Buffer	Supplied as solution form in PBS or lyophilized from PBS.
Reconstitution	Reconstitute in sterile water for a stock solution.

 Tel: 1-631-559-9269 1-516-512-3133

 Email: info@creative-biomart.com  Fax: 1-631-938-8127

 45-1 Ramsey Road, Shirley, NY 11967, USA

Shipping They are shipped out with dry ice/blue ice unless customers require otherwise.

GENE INFORMATION

Gene Name	SULT1A1 sulfotransferase family, cytosolic, 1A, phenol-preferring, member 1 [Homo sapiens (human)]
Official Symbol	SULT1A1
Synonyms	SULT1A1; sulfotransferase family, cytosolic, 1A, phenol-preferring, member 1; STP, STP1; sulfotransferase 1A1; P PST; ts-PST; P-PST 1; aryl sulfotransferase 1; thermostable phenol sulfotransferase1; phenol-sulfating phenol sulfotransferase 1; PST; STP; STP1; P-PST; ST1A1; ST1A3; TSPST1; HAST1/HAST2; MGC5163; MGC131921;
Gene ID	6817
mRNA Refseq	NM_001055
Protein Refseq	NP_001046
MIM	171150
UniProt ID	P50225

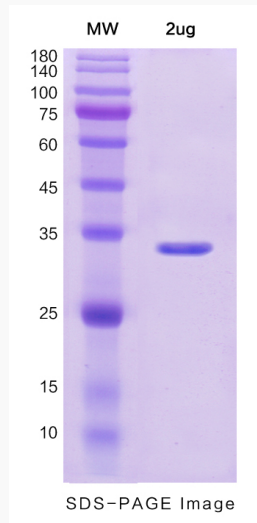
 Tel: 1-631-559-9269 1-516-512-3133

 Email: info@creative-biomart.com  Fax: 1-631-938-8127

 45-1 Ramsey Road, Shirley, NY 11967, USA



SDS-PAGE



Tel: 1-631-559-9269 1-516-512-3133

Email: info@creative-biomart.com Fax: 1-631-938-8127

45-1 Ramsey Road, Shirley, NY 11967, USA