

Recombinant Human SULT4A1 Protein, Myc/DDK-tagged, C13 and N15-labeled

Cat. No. SULT4A1-3968H **Lot. No.** (See product label)

SPECIFICATION

Product Overview	SULT4A1 MS Standard C13 and N15-labeled recombinant protein (NP_055166) with a C-terminal MYC/DDK tag, was expressed in HEK293 cells.
Species	Human
Source	HEK293
Description	This gene encodes a member of the sulfotransferase family. The encoded protein is a brain-specific sulfotransferase believed to be involved in the metabolism of neurotransmitters. Polymorphisms in this gene may be associated with susceptibility to schizophrenia.
Molecular Mass	33 kDa
AA Sequence	MAESEAETPSTPGEFESKYFEFHGVRLPPFCRGKMEEIANFPVRPSDVWIVTYPPG TSLIQEVVYLVSQGADPDEIGLMNIDEQLPVLEYPQPGLDIKELTSPRLIKSHLPYRF LPSDLHNGDSKVIYMARNPKDLVVSYYQFHRSRLRTMSYRGTFQEFCCRFRMNDKLG YGSWFEHVQEFWEHRMDSNVLFKYEDEMHRDLVTMVEQLARFLGVSCDKAQLEALT EHCHQLVDQCCNAEALPVGRGRVGLWKDIFTVSMNEKFDLVYKQKMGKCDLTFDF YLTRTRPLEQKLISEEDLAANDILDYKDDDDKV
Purity	> 80% as determined by SDS-PAGE and Coomassie blue staining
Stability	Stable for 3 months from receipt of products under proper storage and handling

 Tel: 1-631-559-9269 1-516-512-3133

 Email: info@creative-biomart.com  Fax: 1-631-938-8127

 45-1 Ramsey Road, Shirley, NY 11967, USA

conditions.

Storage Store at -80 centigrade. Avoid repeated freeze-thaw cycles.

Concentration 50 µg/mL as determined by BCA

Storage Buffer 100 mM glycine, 25 mM Tris-HCl, pH 7.3.

GENE INFORMATION

Gene Name [SULT4A1 sulfotransferase family 4A member 1 \[Homo sapiens \(human\) \]](#)

Official Symbol [SULT4A1](#)

Synonyms SULT4A1; sulfotransferase family 4A, member 1; sulfotransferase 4A1; hBR STL 1; SULTX3; ST4A1; hBR-STL; nervous system sulfotransferase; sulfotransferase-related protein; brain sulfotransferase-like protein; nervous system cytosolic sulfotransferase; NST; BRSTL1; BR-STL-1; DJ388M5.3; hBR-STL-1; MGC40032;

Gene ID [25830](#)

mRNA Refseq [NM_014351](#)

Protein Refseq [NP_055166](#)

MIM [608359](#)

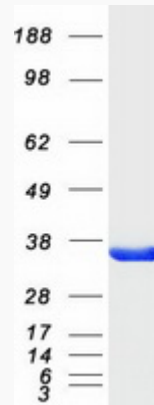
UniProt ID [Q9BR01](#)

 Tel: 1-631-559-9269 1-516-512-3133

 Email: info@creative-biomart.com  Fax: 1-631-938-8127

 45-1 Ramsey Road, Shirley, NY 11967, USA

SDS-PAGE



 Tel: 1-631-559-9269 1-516-512-3133

 Email: info@creative-biomart.com  Fax: 1-631-938-8127

 45-1 Ramsey Road, Shirley, NY 11967, USA