

Recombinant SUMO Protein, His tagged

Cat. No. SUMO-02 Lot. No. (See product label)

SPECIFICATION

Product Overview	Sumo tag (Ubiquitin-like protein) Protein (His-Tag)
Source	E.coli
Form	Liquid
Molecular Mass	14.13 kDa
Purity	> 90% by SDS-PAGE
N-terminal Sequence Analysis	Met
AA Sequence	MNWSHPQFEKSSGSSGGHHHHHHGGSSGSGSDSEVNQEAKPEVKPEVKPETHIN LKVSDGSSEIFFKIKKTTPLRRLMEAFKRQGGKEMDSLRFYDGIQADQAPEDLDM EDNDIIEAHREQIG
Note	For laboratory use only. Not for household use.
Storage	Samples are stable for twelve months from date of receipt at -20 to -80 centigrade. Store it under sterile conditions at -20 to -80 centigrade upon receiving. Recommend to aliquot the protein into smaller quantities for optimal storage. Avoid repeated freeze-thaw cycles.
Storage Buffer	PBS pH 7.4

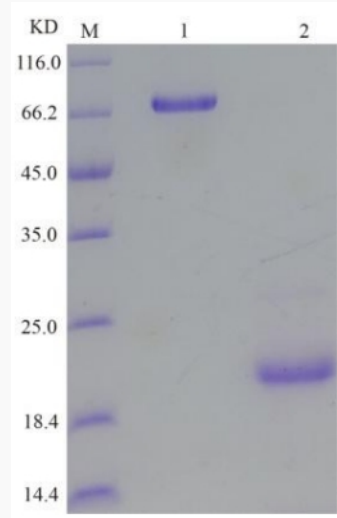
 Tel: 1-631-559-9269 1-516-512-3133

 Email: info@creative-biomart.com  Fax: 1-631-938-8127

 45-1 Ramsey Road, Shirley, NY 11967, USA

Concentration 0.5 mg/mL

SDS-PAGE and WB



M: Protein Marker Lane 1: BSA (5 µg) Lane 2: Sumo tag (5 µg)

 Tel: 1-631-559-9269 1-516-512-3133

 Email: info@creative-biomart.com  Fax: 1-631-938-8127

 45-1 Ramsey Road, Shirley, NY 11967, USA