

Recombinant Human SUMO1 protein, GST-tagged

Cat. No. SUMO1-1247H Lot. No. (See product label)

SPECIFICATION

Product Overview	Recombinant Human SUMO1 protein, fused with GST tag, was expressed in E. coli.
Species	Human
Source	E.coli
Form	20 mM Tris, 150 mM NaCl, 2 mM βME, 10% Glycerol
Purity	~95% by SDS-PAGE
Storage	This product is stable at ≤ -70°C for up to 6 months from the date of receipt. For optimal storage, aliquot into smaller quantities after centrifugation and store at recommended temperature.

GENE INFORMATION

Gene Name	SUMO1 SMT3 suppressor of mif two 3 homolog 1 (<i>S. cerevisiae</i>) [<i>Homo sapiens</i>]
Official Symbol	SUMO1
Synonyms	SUMO1; SMT3 suppressor of mif two 3 homolog 1 (<i>S. cerevisiae</i>); SMT3 suppressor of mif two 3 homolog 1 (yeast) , ubiquitin like 1 (sentrin) , UBL1; small ubiquitin-related modifier 1; GMP1; OFC10; PIC1; SMT3C; SMT3H3; SUMO 1; sentrin; SMT3 homolog 3; GAP modifying protein 1; ubiquitin-like protein UBL1; ubiquitin-like protein SMT3C; ubiquitin-homology domain protein PIC1; DAP1; SMT3; UBL1; SENP2;

 Tel: 1-631-559-9269 1-516-512-3133

 Email: info@creative-biomart.com  Fax: 1-631-938-8127

 45-1 Ramsey Road, Shirley, NY 11967, USA

Gene ID 7341

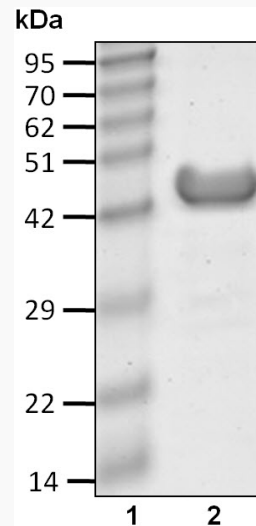
mRNA Refseq NM_001005781

Protein Refseq NP_001005781

MIM 601912

UniProt ID P63165

SDS-PAGE



 Tel: 1-631-559-9269 1-516-512-3133

 Email: info@creative-biomart.com  Fax: 1-631-938-8127

 45-1 Ramsey Road, Shirley, NY 11967, USA