

Recombinant Human SUMO1 protein, GST-tagged

Cat. No. SUMO1-3054H Lot. No. (See product label)

SPECIFICATION

Product Overview	Recombinant Human SUMO1 protein(3-101 aa), fused with N-terminal GST tag, was expressed in E. coli.
Species	Human
Source	E.coli
ProteinLength	3-101 aa
Form	The purified protein was Lyophilized from sterile PBS (58mM Na ₂ HPO ₄ , 17mM NaH ₂ PO ₄ , 68mM NaCl, pH8.). 5 % trehalose and 5 % mannitol are added as protectant before lyophilization. The elution buffer contain 100mM GSH.
Purity	95%, by SDS-PAGE with Coomassie Brilliant Blue staining.
Storage	Short-term storage: Store at 2-8°C for (1-2 weeks). Long-term storage: Aliquot and store at -20°C to -80°C for up to 3 months, reconstitution with sterile water and addition of an equal volume of glycerol. Avoid repeat freeze-thaw cycles.
Reconstitution	Reconstitute at 0.25 µg/µl in 200 µl sterile water for short-term storage. After reconstitution with sterile water, if glycerol has no effect on subsequent experiments, it is recommended to add an equal volume of glycerol for long-term storage.
AA Sequence	DQEAKPSTEDLGDKKEGEYIKLVIGQDSSEIHFKVKMTTHLKKLKESYCQRQGVPM NSLRFLFEGQRIADNHTPKELGMEEEDVIEVYQEQTGGHSTV

 Tel: 1-631-559-9269 1-516-512-3133

 Email: info@creative-biomart.com  Fax: 1-631-938-8127

 45-1 Ramsey Road, Shirley, NY 11967, USA

GENE INFORMATION

Gene Name	SUMO1 SMT3 suppressor of mif two 3 homolog 1 (<i>S. cerevisiae</i>) [<i>Homo sapiens</i>]
Official Symbol	SUMO1
Synonyms	SUMO1; SMT3 suppressor of mif two 3 homolog 1 (<i>S. cerevisiae</i>); SMT3 suppressor of mif two 3 homolog 1 (yeast) , ubiquitin like 1 (sentrin) , UBL1; small ubiquitin-related modifier 1; GMP1; OFC10; PIC1; SMT3C; SMT3H3; SUMO 1; sentrin; SMT3 homolog 3; GAP modifying protein 1; ubiquitin-like protein UBL1; ubiquitin-like protein SMT3C; ubiquitin-homology domain protein PIC1; DAP1; SMT3; UBL1; SENP2;
Gene ID	7341
mRNA Refseq	NM_001005781
Protein Refseq	NP_001005781
MIM	601912
UniProt ID	P63165

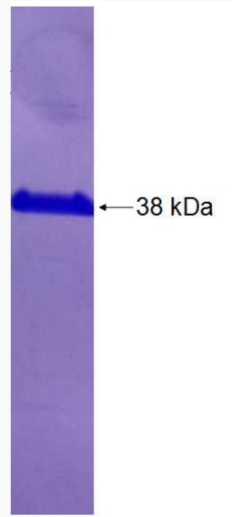
 Tel: 1-631-559-9269 1-516-512-3133

 Email: info@creative-biomart.com  Fax: 1-631-938-8127

 45-1 Ramsey Road, Shirley, NY 11967, USA



SDS-PAGE



Tel: 1-631-559-9269 1-516-512-3133

Email: info@creative-biomart.com Fax: 1-631-938-8127

45-1 Ramsey Road, Shirley, NY 11967, USA