

Recombinant Human SUMO1 protein

Cat. No. SUMO1-3455H Lot. No. (See product label)

SPECIFICATION

Product Overview	Recombinant Human SUMO1protein(P63165)(101aa) was expressed in E. coli.
Species	Human
Source	E.coli
ProteinLength	101aa
Tag	Non
Form	20mM Tris.Cl, 50mM NaCl, 50% Glycerol, pH8.0.
Molecular Mass	11.6kDa
Storage	Store at -80°C and avoid repeated freeze-thaw cycles.
Reconstitution	It is recommended that sterile water be added to the vial to prepare a stock solution of 0.2 ug/ul. Centrifuge the vial at 4°C before opening to recover the entire contents.

GENE INFORMATION

Gene Name	SUMO1 SMT3 suppressor of mif two 3 homolog 1 (S. cerevisiae) [Homo sapiens]
Official Symbol	SUMO1

 Tel: 1-631-559-9269 1-516-512-3133

 Email: info@creative-biomart.com  Fax: 1-631-938-8127

 45-1 Ramsey Road, Shirley, NY 11967, USA

Synonyms SUMO1; SMT3 suppressor of mif two 3 homolog 1 (*S. cerevisiae*); SMT3 suppressor of mif two 3 homolog 1 (yeast) , ubiquitin like 1 (sentrin) , UBL1; small ubiquitin-related modifier 1; GMP1; OFC10; PIC1; SMT3C; SMT3H3; SUMO 1; sentrin; SMT3 homolog 3; GAP modifying protein 1; ubiquitin-like protein UBL1; ubiquitin-like protein SMT3C; ubiquitin-homology domain protein PIC1; DAP1; SMT3; UBL1; SENP2;

Gene ID [7341](#)

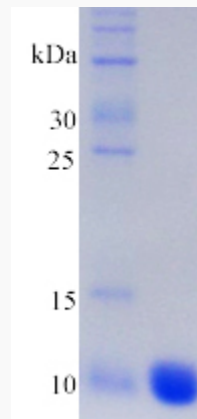
mRNA Refseq [NM_001005781](#)

Protein Refseq [NP_001005781](#)

MIM [601912](#)

UniProt ID [P63165](#)

SDS-PAGE



 Tel: 1-631-559-9269 1-516-512-3133

 Email: info@creative-biomart.com  Fax: 1-631-938-8127

 45-1 Ramsey Road, Shirley, NY 11967, USA