

# Recombinant Human SUOX Protein, Myc/DDK-tagged, C13 and N15-labeled

**Cat. No.** SUOX-6203H    **Lot. No.** (See product label)

## SPECIFICATION

<b>Product Overview</b>	SUOX MS Standard C13 and N15-labeled recombinant protein (NP_000447) with a C-terminal MYC/DDK tag, was expressed in HEK293 cells.
<b>Species</b>	Human
<b>Source</b>	HEK293
<b>Description</b>	Sulfite oxidase is a homodimeric protein localized to the intermembrane space of mitochondria. Each subunit contains a heme domain and a molybdopterin-binding domain. The enzyme catalyzes the oxidation of sulfite to sulfate, the final reaction in the oxidative degradation of the sulfur amino acids cysteine and methionine. Sulfite oxidase deficiency results in neurological abnormalities which are often fatal at an early age. Alternative splicing results in multiple transcript variants encoding identical proteins.
<b>Molecular Mass</b>	60.3 kDa
<b>AA Sequence</b>	<p>MLLLHRAVVLRLQQACRLKSIPSRICIQACSTNDSFQPQRPSLTFSGDNSSTQGWRV            MGTLGLGAVLAYQDHRCAAQESTHIYTKKEVSSHTSPETGIWVTLGSEVFDVTEF            VDLHPGGPSKMLAAGGPLEPFWALYAVHNQSHVRELLAQYKIGELNPEDKVAPTV            ETSDPYADDPVRHPALKVNSQRPFNAEPPPELLTENYITPNPIFFTRNHLVPNLDPD            TYRLHVVGAPGGQSLSLSLDDLHNFPRIYVITVTLQCAGNRRSEMTQVKEVKGLEWR            TGAISTARWAGARLCDVLAQAGHQLCETEAHVCFEGLSDSDPTGTAYGASIPARAM</p>

 Tel: 1-631-559-9269    1-516-512-3133

 Email: [info@creative-biomart.com](mailto:info@creative-biomart.com)     Fax: 1-631-938-8127

 45-1 Ramsey Road, Shirley, NY 11967, USA

DPEAEVLLAYEMNGQPLPRDHGFPVRVVVPGVVGARHVKWLGRVSVQPEESYSH  
 WQRRDYKGFSPVDWETVDFDSAPSIQELPVQSAITEPRDGETVESGEVTIKGYAW  
 SGGGRAVIRVDVSLDGGLTWQVAKLDGEEQRPRKAWAWRLWQLKAPVPAGQKEL  
 NIVCKAVDDGYNVQPDTVAPIWNLRGVLSTNAWHRVHVYVSPTRTRPLEQKLISEEDL  
 AANDILDYKDDDDKV

**Purity** > 80% as determined by SDS-PAGE and Coomassie blue staining

**Stability** Stable for 3 months from receipt of products under proper storage and handling conditions.

**Storage** Store at -80 centigrade. Avoid repeated freeze-thaw cycles.

**Concentration** 50 µg/mL as determined by BCA

**Storage Buffer** 100 mM glycine, 25 mM Tris-HCl, pH 7.3.

## GENE INFORMATION

**Gene Name** [SUOX sulfite oxidase \[ Homo sapiens \(human\) \]](#)

**Official Symbol** [SUOX](#)

**Synonyms** SUOX; sulfite oxidase; sulfite oxidase, mitochondrial;

**Gene ID** [6821](#)

**mRNA Refseq** [NM\\_000456](#)

**Protein Refseq** [NP\\_000447](#)

 Tel: 1-631-559-9269 1-516-512-3133

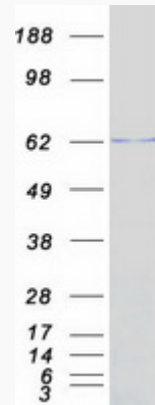
 Email: [info@creative-biomart.com](mailto:info@creative-biomart.com)  Fax: 1-631-938-8127

 45-1 Ramsey Road, Shirley, NY 11967, USA

**MIM** 606887

**UniProt ID** P51687

**SDS-PAGE**



 Tel: 1-631-559-9269 1-516-512-3133

 Email: [info@creative-biomart.com](mailto:info@creative-biomart.com)  Fax: 1-631-938-8127

 45-1 Ramsey Road, Shirley, NY 11967, USA