

Active Recombinant Full Length Human SUV39H2 histone lysine methyltransferase Protein, GST tagged

Cat. No. SUV39H1-12HFL Lot. No. (See product label)

SPECIFICATION

Product Overview	Recombinant SUV39H2 was expressed in E. coli cells as the full length protein (accession number NP_078946.1) with an N-terminal GST tag.
Species	Human
Source	E.coli
ProteinLength	1-410 aa
Description	Enables S-adenosyl-L-methionine binding activity; histone methyltransferase activity (H3-K9 specific); and zinc ion binding activity. Involved in chromatin assembly or disassembly and chromatin remodeling. Acts upstream of or within cellular response to hypoxia and negative regulation of transcription by RNA polymerase II. Located in chromatin.
Tag	N-GST
Molecular Mass	66.8 kDa
Purity	> 55%
Storage	Recombinant proteins in solution are temperature sensitive and must be stored at -80 centigrade to prevent degradation. Avoid repeated freeze/thaw cycles and keep on ice when not in storage.

 Tel: 1-631-559-9269 1-516-512-3133

 Email: info@creative-biomart.com  Fax: 1-631-938-8127

 45-1 Ramsey Road, Shirley, NY 11967, USA

Concentration 0.5 µg/µL

Storage Buffer 25 mM Tris pH 8.0, 300 mM NaCl, 5% glycerol.

GENE INFORMATION

Gene Name SUV39H2 SUV39H2 histone lysine methyltransferase [Homo sapiens (human)]

Official Symbol SUV39H2

Synonyms

SUV39H2; SUV39H2 histone lysine methyltransferase; KMT1B; histone-lysine N-methyltransferase SUV39H2; H3-K9-HMTase 2; histone H3-K9 methyltransferase 2; histone methyltransferase SUV39H2; lysine N-methyltransferase 1B; su(var)3-9 homolog 2; suppressor of variegation 3-9 homolog 2; NP_001180353.1; EC 2.1.1.355

Gene ID 79723

mRNA Refseq NM_024670

Protein Refseq NP_078946

MIM 606503

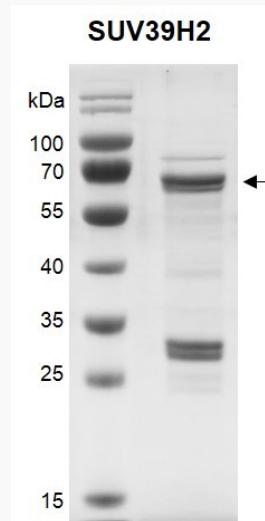
UniProt ID Q9H511

 Tel: 1-631-559-9269 1-516-512-3133

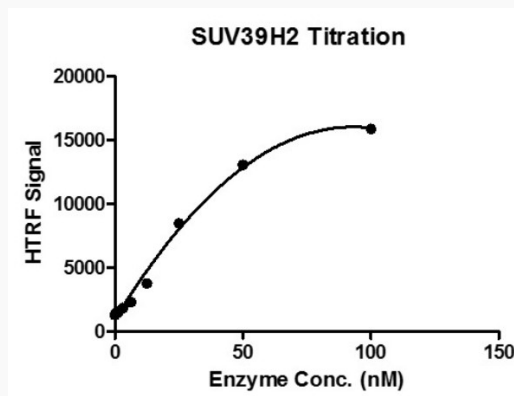
 Email: info@creative-biomart.com  Fax: 1-631-938-8127

 45-1 Ramsey Road, Shirley, NY 11967, USA

SDS-PAGE



HTRF assay for SUV39H2 activity



3 μ M H3 (1-21) peptide was incubated with SUV39H2 in reaction buffer for 3 hours at room temperature. Anti-H3K9me2 antibody was used to detect reaction products.

HTRF assay for SUV39H2 activity

3 μ M H3 (1-21) peptide was incubated with SUV39H2 in reaction buffer for 3 hours at room temperature. Anti-H3K9me2 antibody was used to detect reaction products.

Tel: 1-631-559-9269 1-516-512-3133

Email: info@creative-biomart.com Fax: 1-631-938-8127

45-1 Ramsey Road, Shirley, NY 11967, USA