

# Recombinant Human SUV39H1 Protein (Gly7-Met271), N-His tagged

**Cat. No.** SUV39H1-6381H    **Lot. No.** (See product label)

## SPECIFICATION

<b>Product Overview</b>	Recombinant human SUV39H1 (Gly7-Met271) fused with the N-His tag was expressed in E. coli.
<b>Species</b>	Human
<b>Source</b>	E.coli
<b>ProteinLength</b>	Gly7-Met271
<b>Form</b>	Lyophilized powder/frozen liquid
<b>Molecular Mass</b>	33.27 kDa
<b>Purity</b>	> 90 % as determined by SDS-PAGE
<b>Notes</b>	For research use only.
<b>Storage</b>	Use a manual defrost freezer and avoid repeated freeze thaw cycles. Store at 2 to 8 centigrade for one week. Store at -20 to -80 centigrade for twelve months from the date of receipt.
<b>Storage Buffer</b>	0.01M PBS, pH 7.4, 0.02 % NLS
<b>Reconstitution</b>	Reconstitute in sterile water for a stock solution.

 Tel: 1-631-559-9269    1-516-512-3133

 Email: [info@creative-biomart.com](mailto:info@creative-biomart.com)     Fax: 1-631-938-8127

 45-1 Ramsey Road, Shirley, NY 11967, USA

**Shipping** They are shipped out with dry ice/blue ice unless customers require otherwise.

## GENE INFORMATION

**Gene Name** SUV39H1 suppressor of variegation 3-9 homolog 1 (Drosophila) [ Homo sapiens (human) ]

**Official Symbol** SUV39H1

**Synonyms** SUV39H1; suppressor of variegation 3-9 homolog 1 (Drosophila); suppressor of variegation 3 9 (Drosophila) homolog 1, SUV39H; histone-lysine N-methyltransferase SUV39H1; KMT1A; H3-K9-HMTase 1; Su (var)3-9 homolog 1; lysine N-methyltransferase 1A; histone H3-K9 methyltransferase 1; position-effect variegation 3-9 homolog; histone-lysine N-methyltransferase, H3 lysine-9 specific 1; MG44; SUV39H;

**Gene ID** 6839

**mRNA Refseq** NM\_003173

**Protein Refseq** NP\_003164

**MIM** 300254

**UniProt ID** O43463

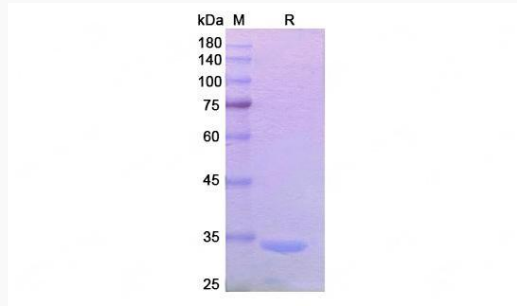
 Tel: 1-631-559-9269 1-516-512-3133

 Email: [info@creative-biomart.com](mailto:info@creative-biomart.com)  Fax: 1-631-938-8127

 45-1 Ramsey Road, Shirley, NY 11967, USA



**SDS-PAGE**



Tel: 1-631-559-9269 1-516-512-3133

Email: [info@creative-biomart.com](mailto:info@creative-biomart.com) Fax: 1-631-938-8127

45-1 Ramsey Road, Shirley, NY 11967, USA