

Recombinant Full Length Human SUZ12 Protein, C-Flag-tagged

Cat. No. SUZ12-763HFL Lot. No. (See product label)

SPECIFICATION

Product Overview	Recombinant Full Length Human SUZ12 Protein, fused to Flag-tag at C-terminus, was expressed in Mammalian cells.
Species	Human
Source	Mammalian Cells
Description	This zinc finger gene has been identified at the breakpoints of a recurrent chromosomal translocation reported in endometrial stromal sarcoma. Recombination of these breakpoints results in the fusion of this gene and JAZF1. The protein encoded by this gene contains a zinc finger domain in the C terminus of the coding region.
Form	25 mM Tris HCl, pH 7.3, 100 mM glycine, 10% glycerol.
Molecular Mass	82.9 kDa
AA Sequence	MAPQKHGGGGGGSGPSAGSGGGGFGGSAAVAAATASGGKSGGGSCGGGGSY SASSSSSAAAAAGAAVLP VKKPKMEHVQADHELFLQAFEKPTQIYRFLRTRNLIPIF LHRTLTYMSHRNSRTNIKRKTKFKVDDMLSK VEKMKGEQESHLSAHLQLTFTGFFH KNDKPSNSENEQNSVTLEVLLVKVCHKKRKDVSCPIRQVPTGK KQVPLNPDLNQT KPGNFPSLAVSSNEFEPNSNHMVKSYSLLFRVTRPGRREFNGMINGETNENIDVNE EL PARRKRNREDGEKTFVAQMTVFDKNRRLQLLDGEYEVAMQEMEECPISKKRAT WETILDGKRLPPFETFS QGPTLQFTLRWTGETNDKSTAPIAKPLATRNSSESLHQENK

 Tel: 1-631-559-9269 1-516-512-3133

 Email: info@creative-biomart.com  Fax: 1-631-938-8127

 45-1 Ramsey Road, Shirley, NY 11967, USA

PGSVKPTQTIHAVKESLTTDLQTRKEKDTPN ENRQKLRIFYQFLYNNNTRQQTEARD
 DLHCPWCTLNCRKLYSLLKHLKLCHSRFIFNYVYHPKGARIDVS INECYDGSYAGNP
 QDIHRQPGFAFSRNGPVKRTPIHILVCRPKRTKASMSEFLESEEDGEVEQQRTYSSG
 HNRLYFHSDTCLPLRPQEMEVDSEDEKDPWLREKTITQIEEFSDVNEGEKEVMKL
 WNLHVMKHGFIADN QMNHACMLFVENYGQKIIKKNLCRNFMLHLVSMHDFNLISIM
 SIDKAVTKLREMQQKLEKGESASPANEE
 ITEEQNGTANGFSEINSKEKALETDSVSGVSKQSKKQKLTRTRPLEQKLISEEDLAAN
 DILDYKDDDDKV

Purity	> 80% as determined by SDS-PAGE and Coomassie blue staining.
Stability	Stable for 12 months from the date of receipt of the product under proper storage and handling conditions. Avoid repeated freeze-thaw cycles.
Storage	Store at -80 centigrade.
Concentration	>50 ug/mL as determined by microplate BCA method.
Preparation	Recombinant protein was captured through anti-DDK affinity column followed by conventional chromatography steps.
Protein Families	Transcription Factors
Full Length	Full L.

GENE INFORMATION

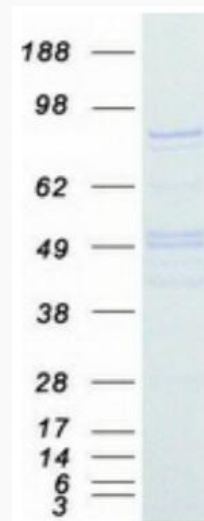
Gene Name	SUZ12 SUZ12 polycomb repressive complex 2 subunit [Homo sapiens (human)]
Official Symbol	SUZ12

 Tel: 1-631-559-9269 1-516-512-3133

 Email: info@creative-biomart.com  Fax: 1-631-938-8127

 45-1 Ramsey Road, Shirley, NY 11967, USA

Synonyms	CHET9; IMMAS; JJAZ1
Gene ID	23512
mRNA Refseq	NM_015355.4
Protein Refseq	NP_056170.2
MIM	606245
UniProt ID	Q15022



Coomassie blue staining of purified SUZ12 protein.

 Tel: 1-631-559-9269 1-516-512-3133

 Email: info@creative-biomart.com  Fax: 1-631-938-8127

 45-1 Ramsey Road, Shirley, NY 11967, USA