

Recombinant Human SV2C protein, His-tagged

Cat. No. SV2C-6815H **Lot. No.** (See product label)

SPECIFICATION

Product Overview	Recombinant Human SV2C protein(Q496J9)(11-150 aa), fused with C-terminal His tag, was expressed in E.coli.
Species	Human
Source	E.coli
ProteinLength	11-150 aa
Form	Phosphate buffered saline.
Molecular Mass	18 kDa
AASequence	LMKGAKDIAREVKKQTVKKVNQAVDRAQDEYTRSYSRFQDEEDDDDYYPAGETY NGEANDDEGSSEATEGHDEDDEIYEGEYQGIPSMNQAKDSIVSGQPQKGDYKDR RELESERRADEEEELAQQYELIIQECGHGRF
Storage	Store at -20°C/-80°C.
Reconstitution	It is recommended that sterile water be added to the vial to prepare a stock solution of 0.2 g/μl. Centrifuge the vial at 4°C before opening to recover the entire contents.

GENE INFORMATION

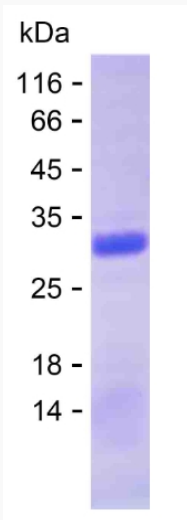
Gene Name	SV2C synaptic vesicle glycoprotein 2C [Homo sapiens]
------------------	--

 Tel: 1-631-559-9269 1-516-512-3133

 Email: info@creative-biomart.com  Fax: 1-631-938-8127

 45-1 Ramsey Road, Shirley, NY 11967, USA

Official Symbol	SV2C
Synonyms	SV2C; synaptic vesicle glycoprotein 2C; synaptic vesicle protein 2C; MGC118874; MGC118875; MGC118876; MGC118877;
Gene ID	22987
mRNA Refseq	NM_014979
Protein Refseq	NP_055794
MIM	610291
UniProt ID	Q496J9

SDS-PAGE

 Tel: 1-631-559-9269 1-516-512-3133

 Email: info@creative-biomart.com  Fax: 1-631-938-8127

 45-1 Ramsey Road, Shirley, NY 11967, USA