

## Recombinant Human SV2C protein, GST-tagged

Cat. No. SV2C-6833H Lot. No. (See product label)

### SPECIFICATION

**Product Overview** Recombinant Human SV2C protein(450-524 aa), fused with N-terminal GST tag, was expressed in E. coli.

**Species** Human

**Source** E.coli

**ProteinLength** 450-524 aa

**Tag** N-GST

**Form** The purified protein was Lyophilized from sterile PBS (58mM Na<sub>2</sub>HPO<sub>4</sub>, 17mM NaH<sub>2</sub>PO<sub>4</sub>, 68mM NaCl, pH7.4). 5 % trehalose and 5 % mannitol are added as protectant before lyophilization.

**Purity** 85%, by SDS-PAGE with Coomassie Brilliant Blue staining.

**Storage** Short-term storage: Store at 2-8°C for (1-2 weeks). Long-term storage: Aliquot and store at -20°C to -80°C for up to 3 months, reconstitution with sterile water and addition of an equal volume of glycerol. Avoid repeat freeze-thaw cycles.

**Reconstitution** Reconstitute at 0.25 µg/µl in 200 µl sterile water for short-term storage. After reconstitution with sterile water, if glycerol has no effect on subsequent experiments, it is recommended to add an equal volume of glycerol for long-term storage.

 Tel: 1-631-559-9269 1-516-512-3133

 Email: [info@creative-biomart.com](mailto:info@creative-biomart.com)  Fax: 1-631-938-8127

 45-1 Ramsey Road, Shirley, NY 11967, USA

**AA Sequence** LSVWFPDVIKPLQSDEYALLTRNVERDKYANFTINFTMENQIHTGMEYDNGRFIGVK  
FKSVTFKDSVFKSCTFED

## GENE INFORMATION

**Gene Name** SV2C synaptic vesicle glycoprotein 2C [ Homo sapiens ]

**Official Symbol** SV2C

**Synonyms** SV2C; synaptic vesicle glycoprotein 2C; synaptic vesicle protein 2C; MGC118874;  
MGC118875; MGC118876; MGC118877;

**Gene ID** 22987

**mRNA Refseq** NM\_014979

**Protein Refseq** NP\_055794

**MIM** 610291

**UniProt ID** Q496J9

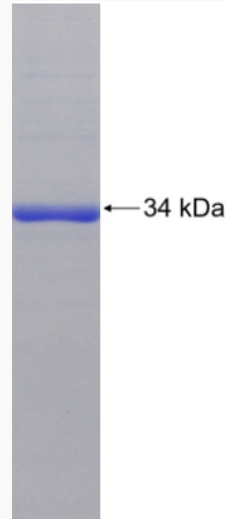
 Tel: 1-631-559-9269 1-516-512-3133

 Email: [info@creative-biomart.com](mailto:info@creative-biomart.com)  Fax: 1-631-938-8127

 45-1 Ramsey Road, Shirley, NY 11967, USA



SDS-PAGE



☎ Tel: 1-631-559-9269 1-516-512-3133

☎ Email: [info@creative-biomart.com](mailto:info@creative-biomart.com) ☎ Fax: 1-631-938-8127

☎ 45-1 Ramsey Road, Shirley, NY 11967, USA