

Recombinant Human SWSAP1 Protein (Met1-Pro229), N-His tagged

Cat. No. SWSAP1-5416H Lot. No. (See product label)

SPECIFICATION

Product Overview	Recombinant human SWSAP1 (Met1-Pro229) fused with the N-terminal His tag was expressed in E. coli.
Species	Human
Source	E.coli
ProteinLength	Met1-Pro229
Description	Enables single-stranded DNA binding activity. Involved in double-strand break repair via homologous recombination and protein stabilization. Part of Shu complex.
Form	Lyophilized powder/frozen liquid
Molecular Mass	25.19 kDa
Purity	> 90 % as determined by SDS-PAGE
Notes	For research use only.
Storage	Use a manual defrost freezer and avoid repeated freeze thaw cycles. Store at 2 to 8 centigrade for one week. Store at -20 to -80 centigrade for twelve months from the date of receipt.

 Tel: 1-631-559-9269 1-516-512-3133

 Email: info@creative-biomart.com  Fax: 1-631-938-8127

 45-1 Ramsey Road, Shirley, NY 11967, USA

Storage Buffer	Supplied as solution form in PBS or lyophilized from PBS.
Reconstitution	Reconstitute in sterile water for a stock solution.
Shipping	They are shipped out with dry ice/blue ice unless customers require otherwise.

GENE INFORMATION

Gene Name	SWSAP1 SWIM-type zinc finger 7 associated protein 1 [Homo sapiens (human)]
Official Symbol	SWSAP1
Synonyms	SWSAP1; SWIM-type zinc finger 7 associated protein 1; SWS1AP1; C19orf39; ZSWIM7AP1; ATPase SWSAP1; SWS1-associated protein 1; ZSWIM7-associated protein 1; zinc finger, SWIM-type containing 7 associated protein 1
Gene ID	126074
mRNA Refseq	NM_175871
Protein Refseq	NP_787067
MIM	614536
UniProt ID	Q6NVH7

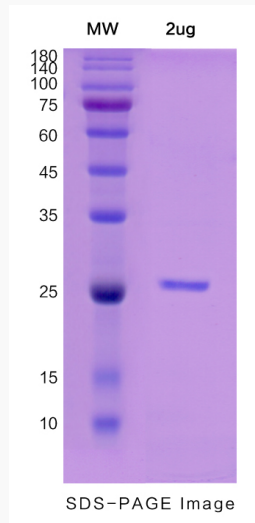
 Tel: 1-631-559-9269 1-516-512-3133

 Email: info@creative-biomart.com  Fax: 1-631-938-8127

 45-1 Ramsey Road, Shirley, NY 11967, USA



SDS-PAGE



Tel: 1-631-559-9269 1-516-512-3133

Email: info@creative-biomart.com Fax: 1-631-938-8127

45-1 Ramsey Road, Shirley, NY 11967, USA