

Recombinant Human SYCE2 Protein, Myc/DDK-tagged, C13 and N15-labeled

Cat. No. SYCE2-1428H **Lot. No.** (See product label)

SPECIFICATION

Product Overview	SYCE2 MS Standard C13 and N15-labeled recombinant protein (NP_001099048) with a C-terminal MYC/DDK tag, was expressed in HEK293 cells.
Species	Human
Source	HEK293
Description	The protein encoded by this gene is part of the synaptonemal complex formed between homologous chromosomes during meiotic prophase. The encoded protein associates with SYCP1 and SYCE1 and is found only where chromosome cores are synapsed.
Molecular Mass	24.5 kDa
AA Sequence	MERQGVDVPHVKCKDQEPQPLGESKEHPRWEENCEEEAGGGPASASCQLTVLEG KSGLYFSSLDSSIDILQKRAQELIENINKSRQKDHALMTNFRNSLTKTKVSDLTEKLEER IYQIYNDHNKIIQEKLQEFTQKMAKISHLETQKQVCHSVETVYKDLCLQPEQSLRLR WGPDHSRGKSPPRPGNSQPPDVFVSSVAETTSQATASEVQTNRDGECTRTRPLEQ KLISEEDLAANDILDYKDDDDKV
Purity	> 80% as determined by SDS-PAGE and Coomassie blue staining
Stability	Stable for 3 months from receipt of products under proper storage and handling conditions.

 Tel: 1-631-559-9269 1-516-512-3133

 Email: info@creative-biomart.com  Fax: 1-631-938-8127

 45-1 Ramsey Road, Shirley, NY 11967, USA

Storage	Store at -80 centigrade. Avoid repeated freeze-thaw cycles.
Concentration	50 µg/mL as determined by BCA
Storage Buffer	100 mM glycine, 25 mM Tris-HCl, pH 7.3.

GENE INFORMATION

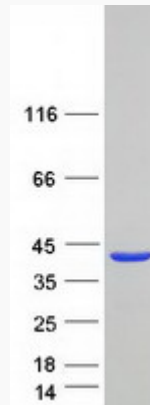
Gene Name	SYCE2 synaptonemal complex central element protein 2 [Homo sapiens (human)]
Official Symbol	SYCE2
Synonyms	SYCE2; synaptonemal complex central element protein 2; central element synaptonemal complex 1; CESC1; central element synaptonemal complex protein 1;
Gene ID	256126
mRNA Refseq	NM_001105578
Protein Refseq	NP_001099048
MIM	611487
UniProt ID	Q6PIF2

 Tel: 1-631-559-9269 1-516-512-3133

 Email: info@creative-biomart.com  Fax: 1-631-938-8127

 45-1 Ramsey Road, Shirley, NY 11967, USA

SDS-PAGE



 Tel: 1-631-559-9269 1-516-512-3133

 Email: info@creative-biomart.com  Fax: 1-631-938-8127

 45-1 Ramsey Road, Shirley, NY 11967, USA