

Recombinant Full Length Human SYCE2 Protein, C-Flag-tagged

Cat. No. SYCE2-825HFL **Lot. No.** (See product label)

SPECIFICATION

Product Overview	Recombinant Full Length Human SYCE2 Protein, fused to Flag-tag at C-terminus, was expressed in Mammalian cells.
Species	Human
Source	Mammalian Cells
Description	The protein encoded by this gene is part of the synaptonemal complex formed between homologous chromosomes during meiotic prophase. The encoded protein associates with SYCP1 and SYCE1 and is found only where chromosome cores are synapsed.
Form	25 mM Tris HCl, pH 7.3, 100 mM glycine, 10% glycerol.
Molecular Mass	24.5 kDa
AA Sequence	MERQGVDVPHVKCKDQEPQPLGESKEHPRWEENCEEEAGGGPASASCQLTVLEG KSGLYFSSLDSSIDIL QKRAQELIENINKSRQKDHALMTNFRNSLTKTKVSDLTEKLEE RIYQIYNDHNKIIQEKLQEFTQKMAKIS HLETTELKQVCHSVETVYKDLCLQPEQSLRL RWGPDHSRGKSPPRPGNSQPPDVFVSSVAETTSQATASEV QTNRDGECTRTRPLEQKLISEEDLAANDILDYKDDDDKV
Purity	> 80% as determined by SDS-PAGE and Coomassie blue staining.

 Tel: 1-631-559-9269 1-516-512-3133

 Email: info@creative-biomart.com  Fax: 1-631-938-8127

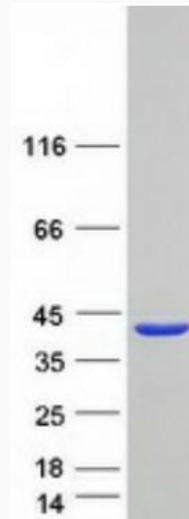
 45-1 Ramsey Road, Shirley, NY 11967, USA

Stability	Stable for 12 months from the date of receipt of the product under proper storage and handling conditions. Avoid repeated freeze-thaw cycles.
Storage	Store at -80 centigrade.
Concentration	>50 ug/mL as determined by microplate BCA method.
Preparation	Recombinant protein was captured through anti-DDK affinity column followed by conventional chromatography steps.
Full Length	Full L.
GENE INFORMATION	
Gene Name	SYCE2 synaptonemal complex central element protein 2 [Homo sapiens (human)]
Official Symbol	SYCE2
Synonyms	CESC1
Gene ID	256126
mRNA Refseq	NM_001105578.2
Protein Refseq	NP_001099048.1
MIM	611487
UniProt ID	Q6PIF2

 Tel: 1-631-559-9269 1-516-512-3133

 Email: info@creative-biomart.com  Fax: 1-631-938-8127

 45-1 Ramsey Road, Shirley, NY 11967, USA



Coomassie blue staining of purified SYCE2 protein.

 Tel: 1-631-559-9269 1-516-512-3133

 Email: info@creative-biomart.com  Fax: 1-631-938-8127

 45-1 Ramsey Road, Shirley, NY 11967, USA