

# Recombinant Full Length Human SYK Protein, C-Flag-tagged

**Cat. No.** SYK-376HFL    **Lot. No.** (See product label)

## SPECIFICATION

<b>Product Overview</b>	Recombinant Full Length Human SYK Protein, fused to Flag-tag at C-terminus, was expressed in Mammalian cells.
<b>Species</b>	Human
<b>Source</b>	Mammalian Cells
<b>Description</b>	This gene encodes a member of the family of non-receptor type Tyr protein kinases. This protein is widely expressed in hematopoietic cells and is involved in coupling activated immunoreceptors to downstream signaling events that mediate diverse cellular responses, including proliferation, differentiation, and phagocytosis. It is thought to be a modulator of epithelial cell growth and a potential tumour suppressor in human breast carcinomas. Alternatively spliced transcript variants encoding different isoforms have been found for this gene.
<b>Form</b>	25 mM Tris HCl, pH 7.3, 100 mM glycine, 10% glycerol.
<b>Molecular Mass</b>	71.9 kDa
<b>AA Sequence</b>	<p>MASSGMADSANHLPFFFGNITREEAEDYLVQGGMSDGLYLLRQSRNYLGGFALSVA  HGRKAHHYTIEREL NGTYAIAGGRTHASPADLCHYHSQESDGLVCLLKKPFNRPQG  VQPKTGPFEDLKENLIREYVKQWTWNLQG QALEQAIISQKPQLEKLIATTAHEKMPWF  HGKISREESEQIVLIGSKTNGKFLIRARDNNGSYALCLLHE GKVLHYRIDKDKTGKLSI  PEGKKFDTLWQLVEHYSYKADGLLRVLTVPCQKIGTQGNVNFVGGRRPQLPGSH PAT  WSAGGIISRIKSYSFPKPGHRKSSPAQGNRQESTVSFNPYEPELAPWAADKGPQRE</p>

 Tel: 1-631-559-9269    1-516-512-3133

 Email: [info@creative-biomart.com](mailto:info@creative-biomart.com)     Fax: 1-631-938-8127

 45-1 Ramsey Road, Shirley, NY 11967, USA

ALPMDTEVYES PYADPEEIRPKEVYLDRKLLTLEDKELGSGNFGTVKKGYYQMKKV  
 VKTVAVKILKNEANDPALKDELLAE ANVMQQLDNPYIVRMIGICEAESWMLVMEMAE  
 LGPLNKYLQQNRHVKDKNIIELVHQVSMGMKYLEESNF VHRDLAARNVLLVTQHYA  
 KISDFGLSKALRADENYYKAQTHGKWPVKWYAPECINYYKFSSKSDVWSFGV LMW  
 EAFSYGQKPYRGMKGSEVTAMLEKGERMGCPAGCPREMYDLMNLCWTYDVENRP  
 GFAAVELRLRNY  
 YDVVNTRTRPLEQKLISEEDLAANDILDYKDDDDKV

**Purity** > 80% as determined by SDS-PAGE and Coomassie blue staining.

**Stability** Stable for 12 months from the date of receipt of the product under proper storage and handling conditions. Avoid repeated freeze-thaw cycles.

**Storage** Store at -80 centigrade.

**Concentration** >50 ug/mL as determined by microplate BCA method.

**Preparation** Recombinant protein was captured through anti-DDK affinity column followed by conventional chromatography steps.

**Protein Families** Druggable Genome, Protein Kinase

**Protein Pathways** B cell receptor signaling pathway, Fc epsilon RI signaling pathway, Fc gamma R-mediated phagocytosis, Natural killer cell mediated cytotoxicity

**Full Length** Full L.

## GENE INFORMATION

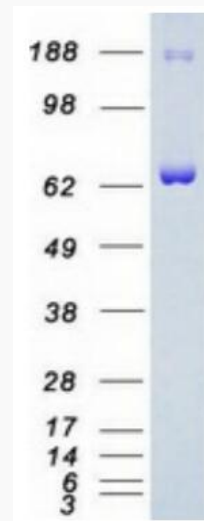
**Gene Name** SYK spleen associated tyrosine kinase [ Homo sapiens (human) ]

 Tel: 1-631-559-9269 1-516-512-3133

 Email: [info@creative-biomart.com](mailto:info@creative-biomart.com)  Fax: 1-631-938-8127

 45-1 Ramsey Road, Shirley, NY 11967, USA

<b>Official Symbol</b>	SYK
<b>Synonyms</b>	IMD82; p72-Syk
<b>Gene ID</b>	6850
<b>mRNA Refseq</b>	NM_003177.7
<b>Protein Refseq</b>	NP_003168.2
<b>MIM</b>	600085
<b>UniProt ID</b>	P43405



Coomassie blue staining of purified SYK protein.

 Tel: 1-631-559-9269 1-516-512-3133

 Email: [info@creative-biomart.com](mailto:info@creative-biomart.com)  Fax: 1-631-938-8127

 45-1 Ramsey Road, Shirley, NY 11967, USA