

Recombinant Human SYN1 Protein, GST-tagged

Cat. No. SYN1-1380H Lot. No. (See product label)

SPECIFICATION

Product Overview	Recombinant Human SYN1 Protein (113-420aa) was expressed in E. coli with N-terminal GST tag.
Species	Human
Source	E.coli
ProteinLength	113-420 a.a.
Description	<p>This gene is a member of the synapsin gene family. Synapsins encode neuronal phosphoproteins which associate with the cytoplasmic surface of synaptic vesicles. Family members are characterized by common protein domains, and they are implicated in synaptogenesis and the modulation of neurotransmitter release, suggesting a potential role in several neuropsychiatric diseases. This member of the synapsin family plays a role in regulation of axonogenesis and synaptogenesis. The protein encoded serves as a substrate for several different protein kinases and phosphorylation may function in the regulation of this protein in the nerve terminal. Mutations in this gene may be associated with X-linked disorders with primary neuronal degeneration such as Rett syndrome. Alternatively spliced transcript variants encoding different isoforms have been identified.</p>
Form	Tris-based buffer, 50% glycerol.
Molecular Mass	61.6 kDa

 Tel: 1-631-559-9269 1-516-512-3133

 Email: info@creative-biomart.com  Fax: 1-631-938-8127

 45-1 Ramsey Road, Shirley, NY 11967, USA

AA Sequence

SRVLLVIDEPHTDWAKYFKGKKIHGEIDIKVEQAEFSDLNLVAHANGGFSVDMEVLR
 NGVKVVRSLKPDFVLIRQHAFSMARNGDYRSLVIGLQYAGIPSVNSLHSVYNFCDKP
 WVFAQMVRLHKKLGT EEFPLIDQTFYPNHKEMLSSTTYPVVVKMGHAHSGMGKVK
 VDNQHDFQDIASVVALTKTYATAEPFIDAKYDVRVQKIGQNYKAYMRTSVSGNWKT
 NTGSAMLEQIAMSDRYKLWVDT CSEIFGGLDICA VEALHGKDGRDHII E VVGSSMPLI
 GDHQDEDKQLLIVLVVNKMAQALPR

Purity Greater than 90% as determined by SDS-PAGE.

Storage The shelf life of liquid form is 6 months at -20 centigrade/-80 centigrade. The shelf life of lyophilized form is 12 months at -20 centigrade/-80 centigrade.

GENE INFORMATION

Gene Name SYN1 synapsin I [Homo sapiens (human)]

Official Symbol SYN1

Synonyms SYN1; SYN1a; SYN1b

Gene ID 6853

mRNA Refseq NM_006950.3

Protein Refseq NP_008881.2

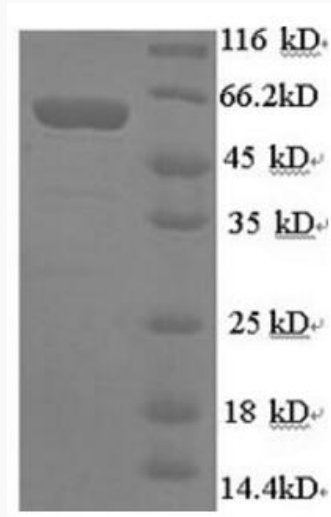
MIM 313440

UniProt ID P17600

 Tel: 1-631-559-9269 1-516-512-3133

 Email: info@creative-biomart.com  Fax: 1-631-938-8127

 45-1 Ramsey Road, Shirley, NY 11967, USA



 Tel: 1-631-559-9269 1-516-512-3133

 Email: info@creative-biomart.com  Fax: 1-631-938-8127

 45-1 Ramsey Road, Shirley, NY 11967, USA