

Recombinant Human SYN1 Protein (113-420 aa), His-tagged

Cat. No. SYN1-1530H Lot. No. (See product label)

SPECIFICATION

Product Overview	Recombinant Human SYN1 Protein (113-420 aa) is produced by Yeast expression system. This protein is fused with a 6xHis tag at the N-terminal. Research Area: Neuroscience. Protein Description: Partial.
Species	Human
Source	Yeast
ProteinLength	113-420 aa
Description	Neuronal phosphoprotein that coats synaptic vesicles, binds to the cytoskeleton, and is believed to function in the regulation of neurotransmitter release. The complex formed with NOS1 and CAPON proteins is necessary for specific nitric-oxid functions at a presynaptic level.
Form	Tris-based buffer,50% glycerol
Molecular Mass	36.6 kDa
AA Sequence	SRVLLVIDEPHTDWAKYFKGKKIHGEIDIKVEQAEFSDLNLVAHANGGFSVDMEVLR NGVKVVRSLKPDFVLIRQHAFSMARNGDYRSLVIGLQYAGIPSVNSLHSVYNFCDKP WVFAQMVRLHKKLGTTEFPLIDQTFYPNHKEMLSSTTYPVVVKMGHAHSGMGKVK VDNQHDFQDIASVVALTKTYATAEPFIDAKYDVRVQKIGQNYKAYMRTSVSGNWK NTGSAMLEQIAMSDRYKLWVDTCSEIFGGLDICAVEALHGKDGRDHIIEVVGSSMPLI GDHQDEDKQLLIVLVVNKMAQALPR

 Tel: 1-631-559-9269 1-516-512-3133

 Email: info@creative-biomart.com  Fax: 1-631-938-8127

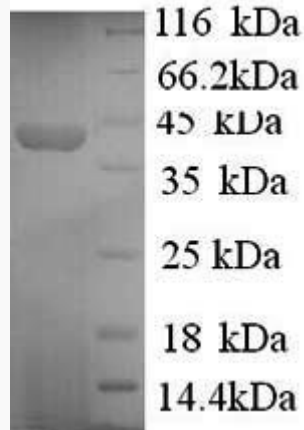
 45-1 Ramsey Road, Shirley, NY 11967, USA

Purity	> 90% as determined by SDS-PAGE.
Notes	Repeated freezing and thawing is not recommended. Store working aliquots at 4 centigrade for up to one week.
Storage	The shelf life is related to many factors, storage state, buffer ingredients, storage temperature and the stability of the protein itself. Generally, the shelf life of liquid form is 6 months at -20 centigrade/-80 centigrade. The shelf life of lyophilized form is 12 months at -20 centigrade/-80 centigrade.
Concentration	A hardcopy of COA with reconstitution instruction is sent along with the products.
GENE INFORMATION	
Gene Name	SYN1 synapsin I [Homo sapiens]
Official Symbol	SYN1
Synonyms	SYN1; synapsin I; synapsin-1; SYNI; SYN1a; SYN1b;
Gene ID	6853
mRNA Refseq	NM_006950
Protein Refseq	NP_008881
MIM	313440
UniProt ID	P17600

 Tel: 1-631-559-9269 1-516-512-3133

 Email: info@creative-biomart.com  Fax: 1-631-938-8127

 45-1 Ramsey Road, Shirley, NY 11967, USA



(Tris-Glycine gel) Discontinuous SDS-PAGE (reduced) with 5% enrichment gel and 15% separation gel.

 Tel: 1-631-559-9269 1-516-512-3133

 Email: info@creative-biomart.com  Fax: 1-631-938-8127

 45-1 Ramsey Road, Shirley, NY 11967, USA