

Recombinant Full Length Human SYN1 Protein, C-Flag-tagged

Cat. No. SYN1-461HFL Lot. No. (See product label)

SPECIFICATION

Product Overview	Recombinant Full Length Human SYN1 Protein, fused to Flag-tag at C-terminus, was expressed in Mammalian cells.
Species	Human
Source	Mammalian Cells
Description	<p>This gene is a member of the synapsin gene family. Synapsins encode neuronal phosphoproteins which associate with the cytoplasmic surface of synaptic vesicles. Family members are characterized by common protein domains, and they are implicated in synaptogenesis and the modulation of neurotransmitter release, suggesting a potential role in several neuropsychiatric diseases. This member of the synapsin family plays a role in regulation of axonogenesis and synaptogenesis. The protein encoded serves as a substrate for several different protein kinases and phosphorylation may function in the regulation of this protein in the nerve terminal. Mutations in this gene may be associated with X-linked disorders with primary neuronal degeneration such as Rett syndrome. Alternatively spliced transcript variants encoding different isoforms have been identified.</p>
Form	25 mM Tris HCl, pH 7.3, 100 mM glycine, 10% glycerol.
Molecular Mass	73.9 kDa
AA Sequence	MNYLRRRLSDSNFMANLPNGYMTDLQRPQPPPPPPGAHSPGATPGPGTATAERSS GVAPAASPAAPSPGS SGGGGFFSSLSNAVKQTAAAAATFSEQVGGGSGGAGRG

 Tel: 1-631-559-9269 1-516-512-3133

 Email: info@creative-biomart.com  Fax: 1-631-938-8127

 45-1 Ramsey Road, Shirley, NY 11967, USA

GAASRVLLVIDEPHTDWAKYFKGKKIHGEID IKVEQAEFSDLNLVAHANGGFSVDME
 VLRNGVKVVRSLKPDFVLIRQHAFSMARNGDYRSLVIGLQYAGI PSVNSLHSVYNFC
 DKPWVFAQMVRLHKKLGTEEFPLIDQTFYPNHKEMLSSTTYPVVVKMGHAHSGMG
 KV KVDNQHDFQDIASVVALTKTYATAEPFIDAKYDVRVQKIGQNYKAYMRTSVSGN
 WKTNTGSAMLEQIAMS DRYKLWVDTCEIFGGLDICAVEALHGKDGRDHIIIEVVGSS
 MPLIGDHQDEDKQLLIVLVVNKMAQALPR QRQRDASPGRGSHGQTPSPGALPLGR
 QTSQQPAGPPAQQRPPPQGGPPQPGPGPQRQGPPLQQRPPPQGG QHLSGLGPP
 AGSPLPQRLPSPTSAPQQPASQAAPPTQGQGRQSRPVAGGGPAPPAARPPASPS
 QRQAGP PQATRQTSVSGPAPPKASGAPPGGQQRQGPQKPPGPAGPTRQASQA
 GPVPRTPGPTTQQPRPSGPGPAG RPKPQLAQKPSQDVPPPATAAAGGPPHPQLN
 KSQSLTNAFNLPEPAPPRPSLSQDEVKAETIRSLRKSFA
 SLFSDTRTRPLEQKLISEEDLAANDILDYKDDDDKV

Purity	> 80% as determined by SDS-PAGE and Coomassie blue staining.
Stability	Stable for 12 months from the date of receipt of the product under proper storage and handling conditions. Avoid repeated freeze-thaw cycles.
Storage	Store at -80 centigrade.
Concentration	>50 ug/mL as determined by microplate BCA method.
Preparation	Recombinant protein was captured through anti-DDK affinity column followed by conventional chromatography steps.
Full Length	Full L.

GENE INFORMATION

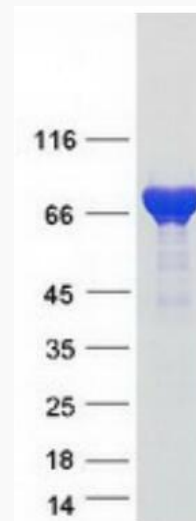
Gene Name SYN1 synapsin I [Homo sapiens (human)]

 Tel: 1-631-559-9269 1-516-512-3133

 Email: info@creative-biomart.com  Fax: 1-631-938-8127

 45-1 Ramsey Road, Shirley, NY 11967, USA

Official Symbol	SYN1
Synonyms	SYNI; EPILX; MRX50; SYN1a; SYN1b; EPILX1
Gene ID	6853
mRNA Refseq	NM_006950.3
Protein Refseq	NP_008881.2
MIM	313440
UniProt ID	P17600



Coomassie blue staining of purified SYN1 protein.

 Tel: 1-631-559-9269 1-516-512-3133

 Email: info@creative-biomart.com  Fax: 1-631-938-8127

 45-1 Ramsey Road, Shirley, NY 11967, USA