

Recombinant Full Length Human SYNJ2 Protein, C-Flag-tagged

Cat. No. SYNJ2-1521HFL **Lot. No.** (See product label)

SPECIFICATION

Product Overview	Recombinant Full Length Human SYNJ2 Protein, fused to Flag-tag at C-terminus, was expressed in Mammalian cells.
Species	Human
Source	Mammalian Cells
Description	The gene is a member of the inositol-polyphosphate 5-phosphatase family. The encoded protein interacts with the ras-related C3 botulinum toxin substrate 1, which causes translocation of the encoded protein to the plasma membrane where it inhibits clathrin-mediated endocytosis. Alternative splicing results in multiple transcript variants.
Form	25 mM Tris HCl, pH 7.3, 100 mM glycine, 10% glycerol.
Molecular Mass	165.4 kDa
AA Sequence	<p>MALSKGLRLLGRLGAEGDCSVLLEARGRDDCLLFEAGTVATLAPEEKEVIKGGYQYKGL TDAYGCLGELRLK SGGTSLSFLVLVTGCTSVGRIPDAEIYKITATDFYPLQEEAKEEE RLIALKKILSSGVFYFSWPNDGSRF DLTVRTQKQGDDSSSEWGN SFFWNQLLHVPLR QHQVSCCDWLLKIICGVVTIRT VYASHKQAKACL VSRVS CERTGTRFHTRGVNDDG HVSNFVETE QMIYMDDGVSSFVQIRGSVPLFWEQPGLQV GSHHLRLHRGLEAN AP AFDRH MVLLKEQY GQQVVNLLGSRGEEVLNRAF KLLWASCHAGDTPMINFDF HQFAKGGKLEKLE TLLRPQLK LHWEDFDVFTKGENVSPRFQKGT LRMNCLDCLDR</p>

 Tel: 1-631-559-9269 1-516-512-3133

 Email: info@creative-biomart.com  Fax: 1-631-938-8127

 45-1 Ramsey Road, Shirley, NY 11967, USA

TNTVQSFIALEVLHLQLKTLGLSSKPIV DRFVESFKAMWSLNGHSLSKVFTGSRAL
 GKAKVGKLDGARSMSRTIQSNFFDGVKQEAIKLLLVGDVY GEEVADKGGMLLDST
 ALLVTPRILKAMTERQSEFTNFKRIRIAMGTWNVNGGKQFRSNVLRRTAELTDWLL DS
 PQLSGATDSQDDSSPADIFAVGFEEMVELSAGNIVNASTTNKKMWGEQLQKAISRS
 HRYILLTSAQLV GVCLYIFVRPYHVPFIRDVAIDTVKTGMGGKAGNKGAVGIRFQFHS
 TSFCFICSHLTAGQSQVKERNEDY KEITQKLCFPMGRNVFSDHYVFWCGDFNYRID
 LTYEEVFYFVKRQDWKKLLEFDQLQLQKSSGKIFKDFH EGAINFGPTYKYDVGSA
 YDTSKCRTPAWTDRVLWWRKKHPDKTAGELNLLDSDLVDVTKVRHTWSPG AL
 QYYGRAELQASDHRPVLAIVEVEVQEVDVGARERVFQEVSSFQGPLDATVVVNLQS
 PTLEEKNEFPED LRTELMQTLGSYGTIVLVRINQGQMLVTFADSHSALSVLVDVGMK
 VKGRAVKIRPKTKDWLKGLEEIIR KRDSMAPVSPTANSCLLEENFDFTSLDYESE
 G DILEDDYLVDEFNQPQGVSDSELGGDDLSDVPGPTAL APPSKSPALTKKKQHPTY
 KDDADLVELKRELEAVGEFRHRSPSRSLVSNRPRPPQPPQPPPTGLMVK KSA
 SDASISSGTHGQYSILQTARLLPGAPQPPKARTGISKPYNVKQIKTTNAQEAEAAIR
 CLLEARGGA SEEALSAVAPRDLEASSEPEPTPGAAPKQAPPLPRRPPRVP
 AIKKPTLRRTGKPLSPEEQFEQQT VHFTIGPPETSVEAPPVVTAPRVPPVPKPRTFQP
 GKAAERPSHRKPASDEAPPGAGASVPPPLEAPPLVP KVPPRRKKSAPAAFHLQVL
 QSNSQLLQGLTYNSSDPSGHPAAGTVFPQGDFLSTSSATSPDSDGTKAM KPEA
 APLLGDYQDPFWNLLHHPKLLNNTWLSKSSDPLDSGTRSPKRDPIDPVSAGASAAK
 AELPPDHGHK
 TLGHWVTISDQEKRTALQVFDPLAKTSGPTRTRRLEQKLISEEDLAANDILDYKDDDD
 KV

Purity	> 80% as determined by SDS-PAGE and Coomassie blue staining.
Stability	Stable for 12 months from the date of receipt of the product under proper storage and handling conditions. Avoid repeated freeze-thaw cycles.
Storage	Store at -80 centigrade.

 Tel: 1-631-559-9269 1-516-512-3133

 Email: info@creative-biomart.com  Fax: 1-631-938-8127

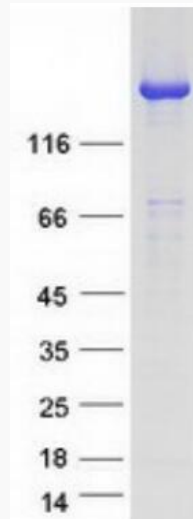
 45-1 Ramsey Road, Shirley, NY 11967, USA

Concentration	>50 ug/mL as determined by microplate BCA method.
Preparation	Recombinant protein was captured through anti-DDK affinity column followed by conventional chromatography steps.
Protein Families	Druggable Genome, Phosphatase
Protein Pathways	Inositol phosphate metabolism, Metabolic pathways, Phosphatidylinositol signaling system
Full Length	Full L.
GENE INFORMATION	
Gene Name	SYNJ2 synaptojanin 2 [Homo sapiens (human)]
Official Symbol	SYNJ2
Synonyms	INPP5H
Gene ID	8871
mRNA Refseq	NM_003898.4
Protein Refseq	NP_003889.1
MIM	609410
UniProt ID	O15056

 Tel: 1-631-559-9269 1-516-512-3133

 Email: info@creative-biomart.com  Fax: 1-631-938-8127

 45-1 Ramsey Road, Shirley, NY 11967, USA



Coomassie blue staining of purified SYNJ2 protein.

 Tel: 1-631-559-9269 1-516-512-3133

 Email: info@creative-biomart.com  Fax: 1-631-938-8127

 45-1 Ramsey Road, Shirley, NY 11967, USA