

Recombinant Full Length Human SYNPO Protein, C-Flag-tagged

Cat. No. SYNPO-745HFL **Lot. No.** (See product label)

SPECIFICATION

Product Overview	Recombinant Full Length Human SYNPO Protein, fused to Flag-tag at C-terminus, was expressed in Mammalian cells.
Species	Human
Source	Mammalian Cells
Description	Synaptopodin is an actin-associated protein that may play a role in actin-based cell shape and motility. The name synaptopodin derives from the protein's associations with postsynaptic densities and dendritic spines and with renal podocytes.
Form	25 mM Tris HCl, pH 7.3, 100 mM glycine, 10% glycerol.
Molecular Mass	99.3 kDa
AA Sequence	<p>MLGPHLPPPPLAPSEGRPTPCAFQIPDGSYRCLALEAEESSGEEGLQGEVGPDTLE EDEGVSRSGDDSAC RVTQGTPQLPKALGIQPPSCSREEQGASQHDDRASQDWDV VKAGQMMTASPSGPGPRVAQKPALGRSTS LTEKDLKEAKARSQQIAAQLTTPPS SNSRGVQLFNRRRQRVNEFTLESHGQRGQKPSQESLRVLPSSLPG HAPGLSLSST SLPEPGPPRHPSQPSPDRGVPGHSMEGYSEEASLLRHLEKVAEEEEVPLVVYLKE NAAL LTANGLHLSQNREAQQSSPAPPPAEVHSPAADVNNQLASPSATLTTPTSNS HNPPATDVNQNPATVVP QSLPLSSIQQNSSEAQLPSNGTGPASKPSTLCADGQP QAPAEVRCSTLLIDKVSTPATTSTFSREATL IPSSRPPASDFMSSSLIDIQPNTLV VSADQEMSGRAAATTPTKVYSEVHFTLAKPPSVVNRTPFGIQ APGGTSQMERS</p>

 Tel: 1-631-559-9269 1-516-512-3133

 Email: info@creative-biomart.com  Fax: 1-631-938-8127

 45-1 Ramsey Road, Shirley, NY 11967, USA

PMLERRHFGEKAPAPQPPSLPDRSPRPQRHIMSRSPMVERRMMGQRSPASERRP
 LGNFT APPTYTETLSTAPLASWVRSPPSYSVLYPSSDPKSSHLKGQAVPASKTGILE
 ESMARRGSRKSMFTFVEK PKVTPNPDLLDLVQTADKRRQRDQGEVGVVEEPFAL
 GAEASNFQQEPAPRDRASPAAAEEVVPEWASCL KSPRIQAKPKPKPNQNLSEASG
 KGAELYARRQSRMEKYVIESSSHTPELARCPSTMSLPSSWKYPTNAP GAFRVAS
 RSPARTPPASLYHGYPENGLRPEPTKQPPYQLRPSLFLVLSPIKEPAKVSPRAASP
 AKPSSL DLVPNLPK GALPPSPALPRPSRSSPGLYTSPGQDSLQPTAVSPPYGGDIS
 PVSPSRAWSPRAKQAPRPSF
 STRNAGIEAQVWKPSFCFKTRTRPLEQKLISEEDLAANDILDYKDDDDKV

Purity	> 80% as determined by SDS-PAGE and Coomassie blue staining.
Stability	Stable for 12 months from the date of receipt of the product under proper storage and handling conditions. Avoid repeated freeze-thaw cycles.
Storage	Store at -80 centigrade.
Concentration	>50 ug/mL as determined by microplate BCA method.
Preparation	Recombinant protein was captured through anti-DDK affinity column followed by conventional chromatography steps.
Full Length	Full L.

GENE INFORMATION

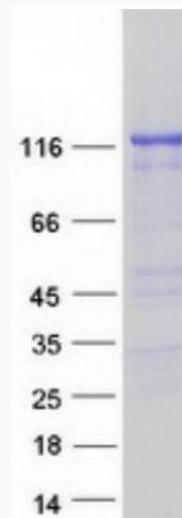
Gene Name	SYNPO synaptopodin [Homo sapiens (human)]
Official Symbol	SYNPO
Synonyms	KIAA1029

 Tel: 1-631-559-9269 1-516-512-3133

 Email: info@creative-biomart.com  Fax: 1-631-938-8127

 45-1 Ramsey Road, Shirley, NY 11967, USA

Gene ID	11346
mRNA Refseq	NM_001166208.2
Protein Refseq	NP_001159680.1
MIM	608155
UniProt ID	Q8N3V7



Coomassie blue staining of purified SYNPO protein.

Tel: 1-631-559-9269 1-516-512-3133

Email: info@creative-biomart.com Fax: 1-631-938-8127

45-1 Ramsey Road, Shirley, NY 11967, USA