

# Recombinant Human SYNPO2L Protein, Myc/DDK-tagged, C13 and N15-labeled

**Cat. No.** SYNPO2L-6047H    **Lot. No.** (See product label)

## SPECIFICATION

### Product Overview

SYNPO2L MS Standard C13 and N15-labeled recombinant protein (NP\_001107605) with a C-terminal MYC/DDK tag, was expressed in HEK293 cells.

### Species

Human

### Source

HEK293

### Description

SYNPO2L (Synaptopodin 2 Like) is a Protein Coding gene. Diseases associated with SYNPO2L include Adenoiditis. Gene Ontology (GO) annotations related to this gene include actin binding. An important paralog of this gene is SYNPO2.

### Molecular Mass

102.3 kDa

### AA Sequence

MGAEEEVLVTLSSGGAPWGFRLHGGAEQRKPLQVSKIRRRSQAGRAGLRERDQLLAI  
 NGVSTNLSHASAMSLIDASGNQLVLTVQRLADEGPVQSPSPHELQVLSPLSPLSPE  
 PPGAPVPQPLQPGSLRSPDSEAYYGETSDADGPATQEKPRRPRRRGPTRPTPP  
 GAPPDEVYLSSPAEPAPTIPGPPSQGDSRVSSPSWEDGAALQPPPAEALLPHGP  
 LRPGPHLIPMVGPVPHVAEDLTTTYTQKAKQAKLQRAESLQEKSIAEAKTKCRTIAS  
 LLTAAPNPHSKGVLNMFKKRRQRAKKYTLVSFGAAAGTGAEEDGVPPTSESELDEE  
 AFSDARSLTNQSDWDSPLYLDMELARAGSRASEGQGSGLGGQLSEVSGRGVQLFE  
 QQRQRADSSTQELARVEPAAMLNGLQSPPRASAPPEAAVLPPSPLPAPVASP  
 RPFQPGGGAPTAPPSIFNRSARPFPTGLQGQRPTTTTSVIFRPLAPKRANDSLGGLSP  
 APPPFLSSQGPTPLPSFTSGVPSHAPVSGSPSTPRSSGPVTATSSLYIPASRPVTP

 Tel: 1-631-559-9269    1-516-512-3133

 Email: [info@creative-biomart.com](mailto:info@creative-biomart.com)     Fax: 1-631-938-8127

 45-1 Ramsey Road, Shirley, NY 11967, USA

GGAPEPPAPPSAAAAMTSTASIFLSAPLRPSARPEAPAPGGGAPEPPSAREQRISVPA  
 ARTGILQEARRRGTRKQMFPRPGKEETKNSPPELLSLVQNLDEKPRAGGAESGPEE  
 DALSLGAEACNFMQPVGARSYKTLPHVTPKTPPPMAPKTPPPMTPKTPPPVAPKPP  
 SRGLLDGLVNGAASSAGIPEPPRLQGRGGELFAKRQSRADRYVVEGTPGPGGLGPR  
 PRSPSPTPSLPPSWKYSPNIRAPPIAYNPLLSPFFPQAARTLPKAQSQGPRATPKQ  
 GIKALDFMRHQPYQLKTAMFCFDEVPPTPGPIASGSPKTARVQEIRRFSTPAPQPTA  
 EPLAPTVLAPRAATTLDEPIWRTELASAPVSPAPPPEAPRGLGASPSSCGFQVARP  
 RFSATRTGLQAHVWRPGAGHQTRTRPLEQKLISEEDLAANDILDYKDDDDKV

<b>Purity</b>	> 80% as determined by SDS-PAGE and Coomassie blue staining
<b>Stability</b>	Stable for 3 months from receipt of products under proper storage and handling conditions.
<b>Storage</b>	Store at -80 centigrade. Avoid repeated freeze-thaw cycles.
<b>Concentration</b>	50 µg/mL as determined by BCA
<b>Storage Buffer</b>	100 mM glycine, 25 mM Tris-HCl, pH 7.3.

## GENE INFORMATION

<b>Gene Name</b>	SYNPO2L synaptopodin 2 like [ Homo sapiens (human) ]
<b>Official Symbol</b>	SYNPO2L
<b>Synonyms</b>	SYNPO2L; synaptopodin 2 like; synaptopodin 2-like protein
<b>Gene ID</b>	79933
<b>mRNA Refseq</b>	NM_001114133

 Tel: 1-631-559-9269 1-516-512-3133

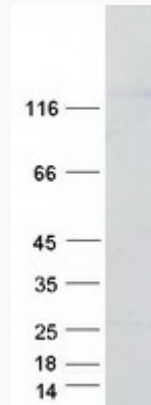
 Email: [info@creative-biomart.com](mailto:info@creative-biomart.com)  Fax: 1-631-938-8127

 45-1 Ramsey Road, Shirley, NY 11967, USA

**Protein Refseq** NP\_001107605

**UniProt ID** Q9H987

**SDS-PAGE**



 Tel: 1-631-559-9269 1-516-512-3133

 Email: [info@creative-biomart.com](mailto:info@creative-biomart.com)  Fax: 1-631-938-8127

 45-1 Ramsey Road, Shirley, NY 11967, USA