

# Recombinant Human SYT1 Protein, Myc/DDK-tagged, C13 and N15-labeled

**Cat. No.** SYT1-2918H    **Lot. No.** (See product label)

## SPECIFICATION

<b>Product Overview</b>	SYT1 MS Standard C13 and N15-labeled recombinant protein (NP_001129277) with a C-terminal MYC/DDK tag, was expressed in HEK293 cells.
<b>Species</b>	Human
<b>Source</b>	HEK293
<b>Description</b>	The synaptotagmins are integral membrane proteins of synaptic vesicles thought to serve as Ca(2+) sensors in the process of vesicular trafficking and exocytosis. Calcium binding to synaptotagmin-1 participates in triggering neurotransmitter release at the synapse.
<b>Molecular Mass</b>	47.4 kDa
<b>AA Sequence</b>	MVSESHHEALAAPPVTTVATVLPSNATEPASPGEKEDAFSKLKEKFMNELHKKIPLP PWALIAIAIVAVLLVLTCCFCICKKCLFKKKKKNKKKGKEKGGKNAINMKDVKDLGKTMK DQALKDDDAETGLTDGEEKEEPKEEEKLGKQLQYSLDYDFQNNQLLVGIIQAAELPAL DMGGTSDPYVKVFLLPDKKKKFETKVHRKTLNPFVNEQFTFKVPYSELGGKTLVMA VYDFDRFSKHDIIGEFKVPMTVDFGHVTEEWRDLQSAEKEEQEKLGDICFSLRYVP TAGKLTVVILEAKNLKMDVGGLSDPYVKIHLMQNGKRLKKKKTTIKKNTLNPPYNES FSFEVPFEQIQKVQVVVTVLDYDKIGKND AIGKVFVGYNSTGAELRHWSMLANPRR PIAQWHTLQVEEEVDAMLAVKKTRTRPLEQKLISEEDLAANDILDYKDDDDKV
<b>Purity</b>	> 80% as determined by SDS-PAGE and Coomassie blue staining

 Tel: 1-631-559-9269    1-516-512-3133

 Email: [info@creative-biomart.com](mailto:info@creative-biomart.com)     Fax: 1-631-938-8127

 45-1 Ramsey Road, Shirley, NY 11967, USA

<b>Stability</b>	Stable for 3 months from receipt of products under proper storage and handling conditions.
<b>Storage</b>	Store at -80 centigrade. Avoid repeated freeze-thaw cycles.
<b>Concentration</b>	50 µg/mL as determined by BCA
<b>Storage Buffer</b>	100 mM glycine, 25 mM Tris-HCl, pH 7.3.

## GENE INFORMATION

<b>Gene Name</b>	SYT1 synaptotagmin I [ Homo sapiens (human) ]
<b>Official Symbol</b>	SYT1
<b>Synonyms</b>	SYT1; synaptotagmin I; SVP65, SYT; synaptotagmin-1; P65; sytl; synaptotagmin 1; SYT; SVP65; DKFZp781D2042;
<b>Gene ID</b>	6857
<b>mRNA Refseq</b>	NM_001135805
<b>Protein Refseq</b>	NP_001129277
<b>MIM</b>	185605
<b>UniProt ID</b>	P21579

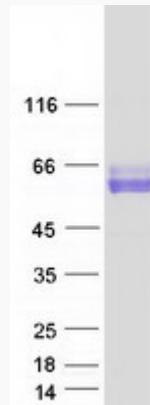
 Tel: 1-631-559-9269 1-516-512-3133

 Email: [info@creative-biomart.com](mailto:info@creative-biomart.com)  Fax: 1-631-938-8127

 45-1 Ramsey Road, Shirley, NY 11967, USA



SDS-PAGE



Tel: 1-631-559-9269 1-516-512-3133

Email: [info@creative-biomart.com](mailto:info@creative-biomart.com) Fax: 1-631-938-8127

45-1 Ramsey Road, Shirley, NY 11967, USA