

Recombinant Rhesus macaque SYT1 Protein (Gly98-Lys422), C-His tagged

Cat. No. SYT1-5538M **Lot. No.** (See product label)

SPECIFICATION

Product Overview	Recombinant Rhesus macaque SYT1 (Gly98-Lys422) fused with the C-terminal His tag was expressed in E. coli.
Species	Macaca mulatta
Source	E.coli
ProteinLength	Gly98-Lys422
Form	Lyophilized powder/frozen liquid
Molecular Mass	35.64 kDa
Purity	> 90 % as determined by SDS-PAGE
Notes	For research use only.
Storage	Use a manual defrost freezer and avoid repeated freeze thaw cycles. Store at 2 to 8 centigrade for one week. Store at -20 to -80 centigrade for twelve months from the date of receipt.
Storage Buffer	Supplied as solution form in PBS or lyophilized from PBS.
Reconstitution	Reconstitute in sterile water for a stock solution.

 Tel: 1-631-559-9269 1-516-512-3133

 Email: info@creative-biomart.com  Fax: 1-631-938-8127

 45-1 Ramsey Road, Shirley, NY 11967, USA

Shipping They are shipped out with dry ice/blue ice unless customers require otherwise.

GENE INFORMATION

Gene Name SYT1 synaptotagmin 1 [*Macaca mulatta* (Rhesus monkey)]

Official Symbol SYT1

Synonyms SYT1; synaptotagmin 1; synaptotagmin-1; synaptotagmin I

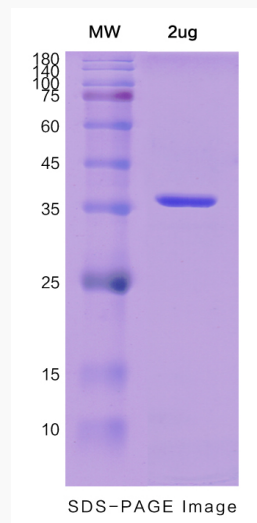
Gene ID 695390

mRNA Refseq XM_001084620

Protein Refseq XP_001084620

UniProt ID F7GFB1

SDS-PAGE



 Tel: 1-631-559-9269 1-516-512-3133

 Email: info@creative-biomart.com  Fax: 1-631-938-8127

 45-1 Ramsey Road, Shirley, NY 11967, USA